



# 119<sup>a</sup> REUNIÓN DE LA ASOCIACIÓN TERRITORIAL VALENCIANA DE LA SOCIEDAD ESPAÑOLA DE ANATOMIA PATOLÓGICA

Caso 6

Enrique García-Gómez

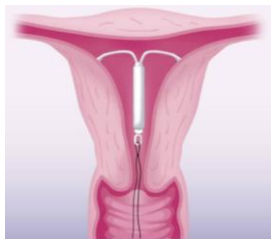
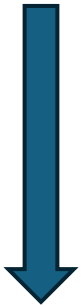
Hospital Vithas 9 de Octubre Valencia

# Historia clínica:

♀ 52 años

**2010**

Hiperplasia  
endometrial  
simple



**2013**

Biopsia  
endometrial



**2014**

Ecografías  
de control  
sin  
visualizarse  
los ovarios



**2015**

Dolor fosa  
iliaca  
izquierda



Tumoración  
sólidoquística  
de 101x97  
mm.

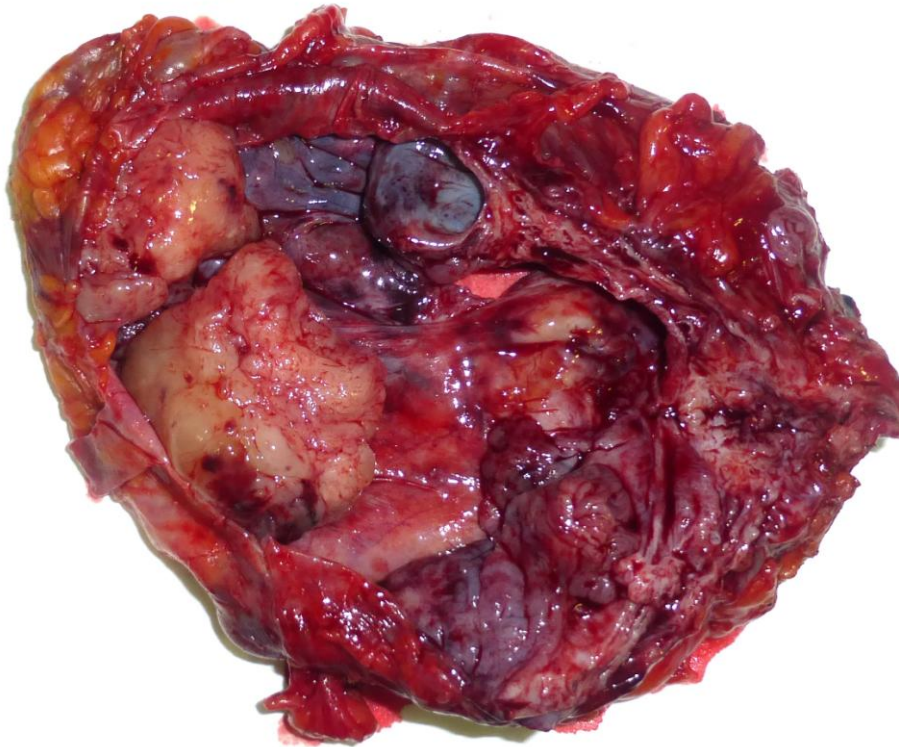
**2015**



# Estudio macroscópico

♀ 57 años

Tumoración ovárica  
izquierda de 12x9  
cm



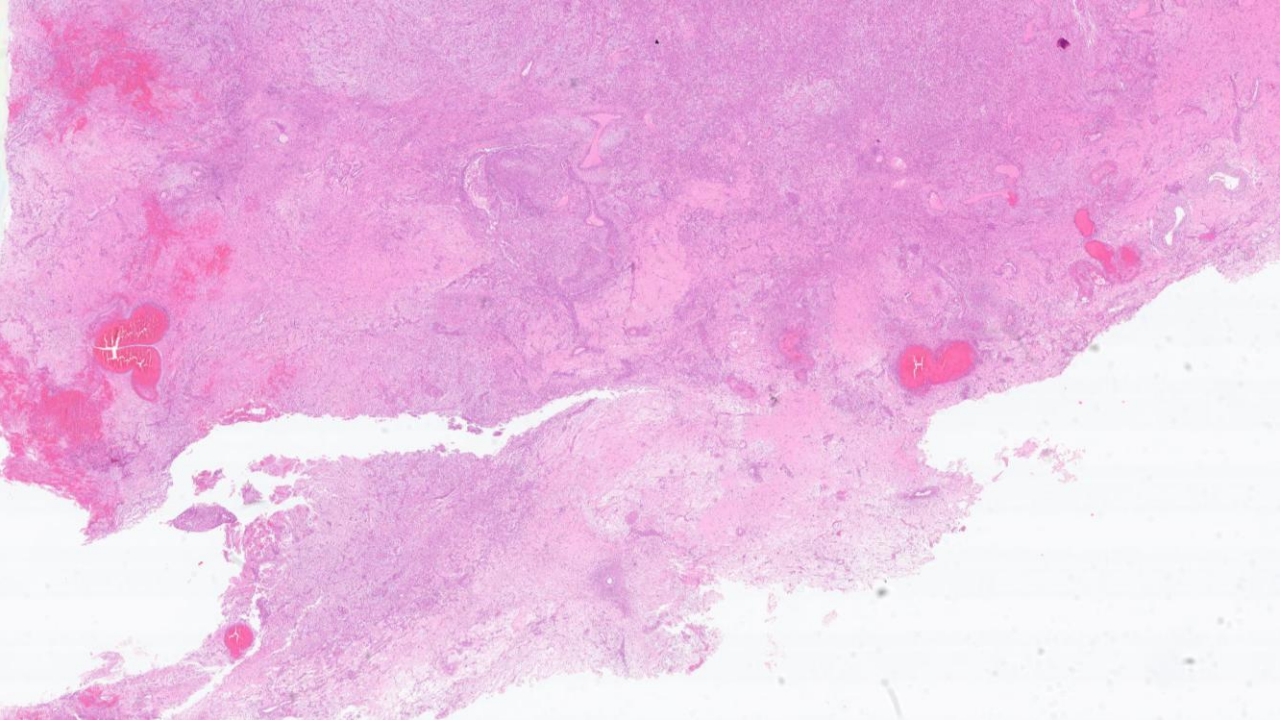
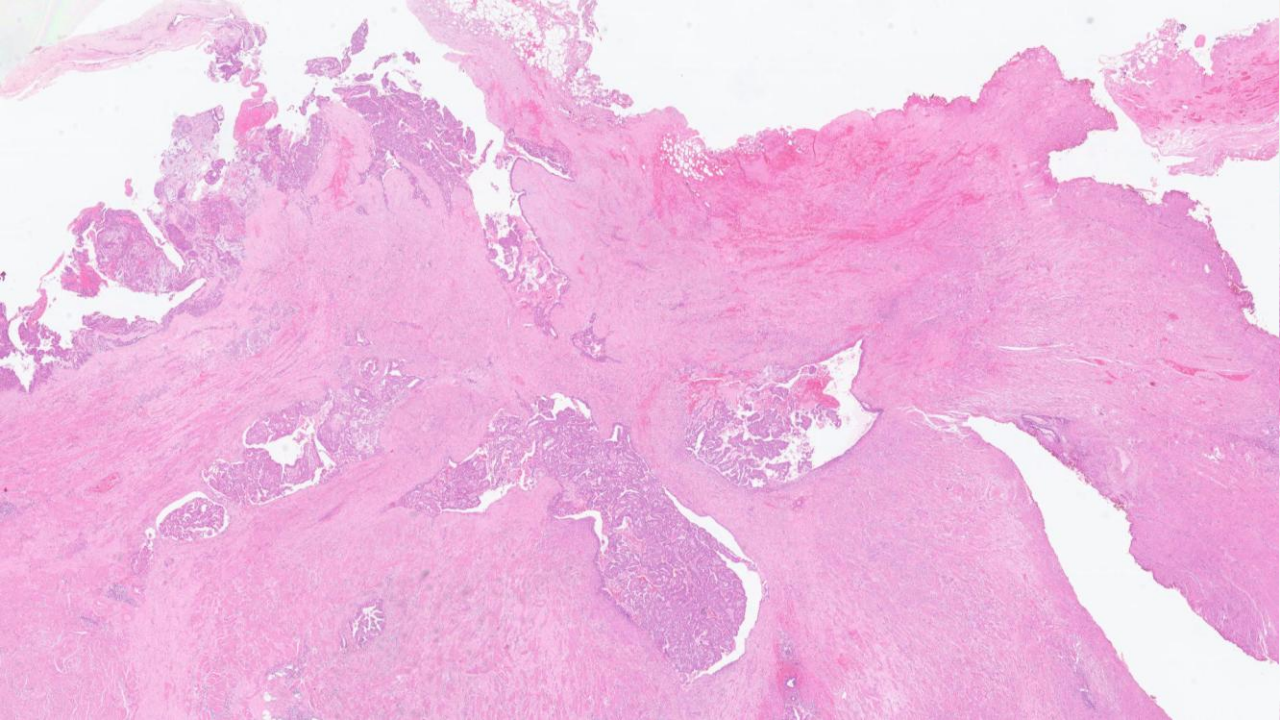
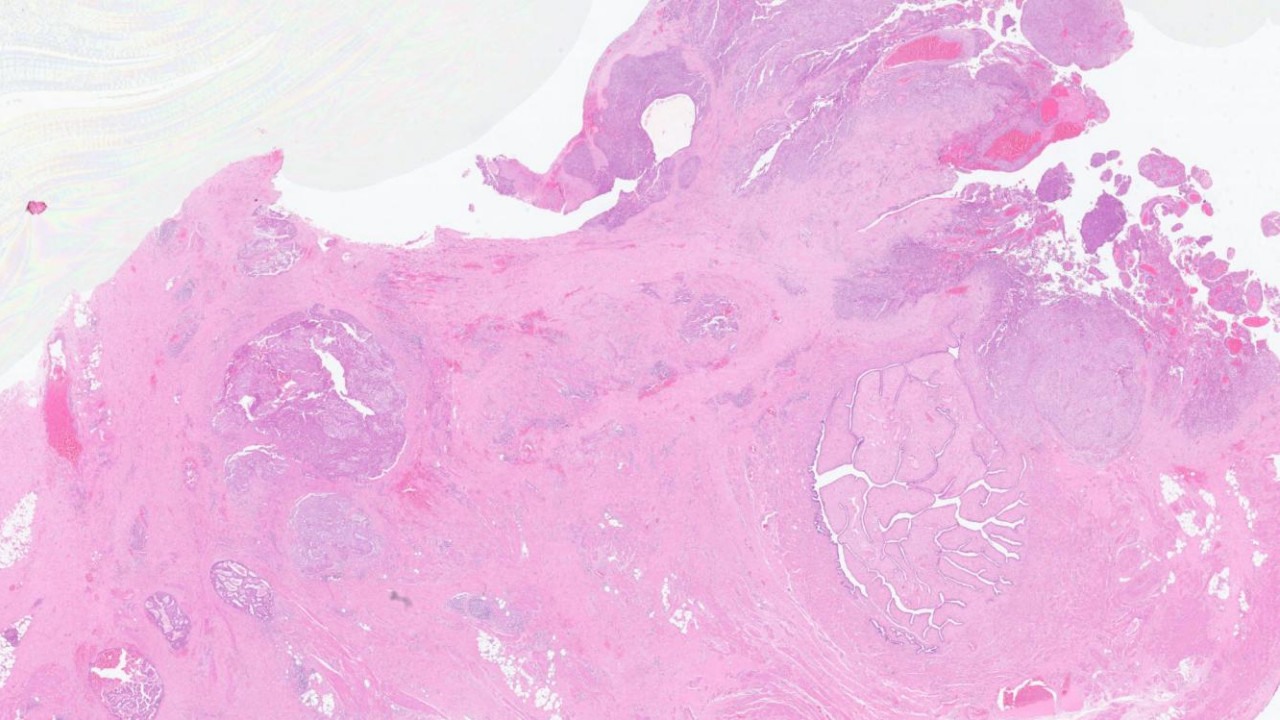
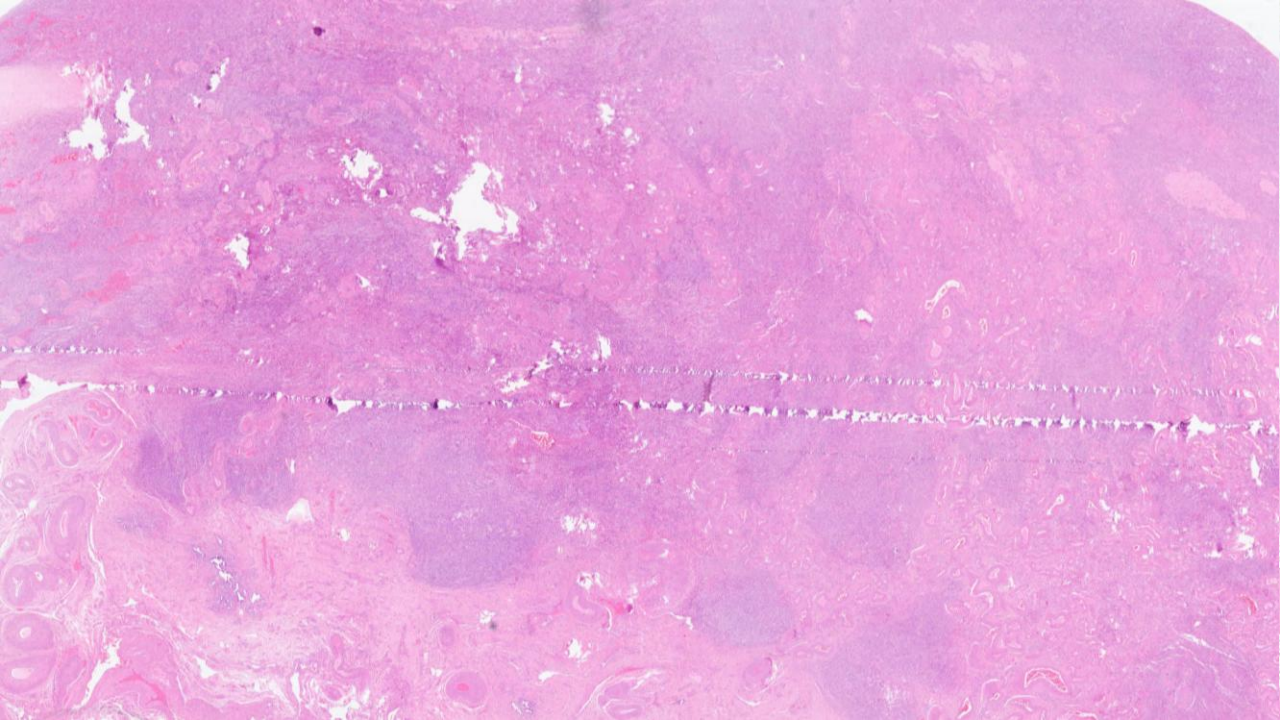
Histerectomía  
subtotal de 6x5,5 cm

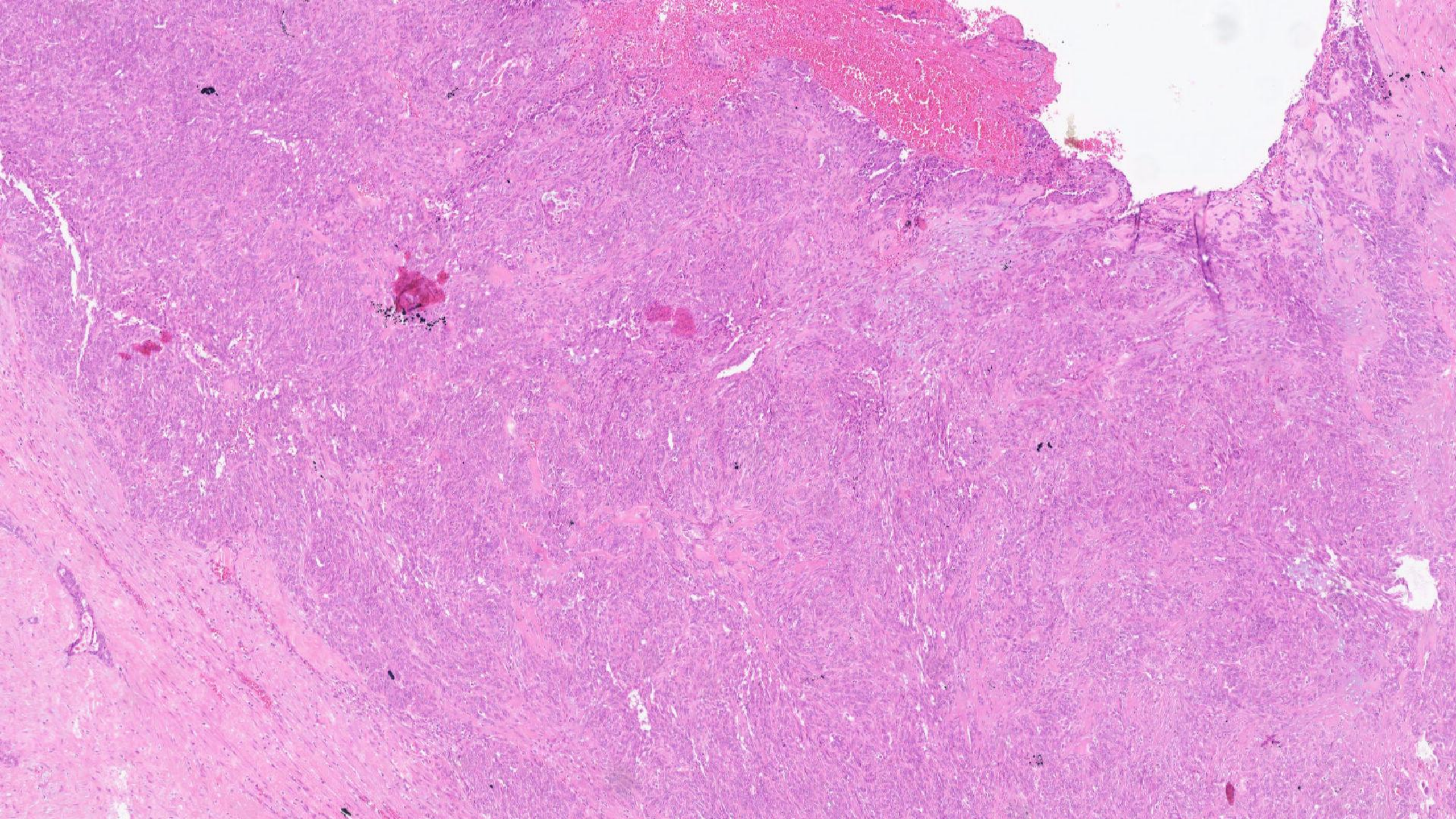
Ovario derecho de  
3x2 cm

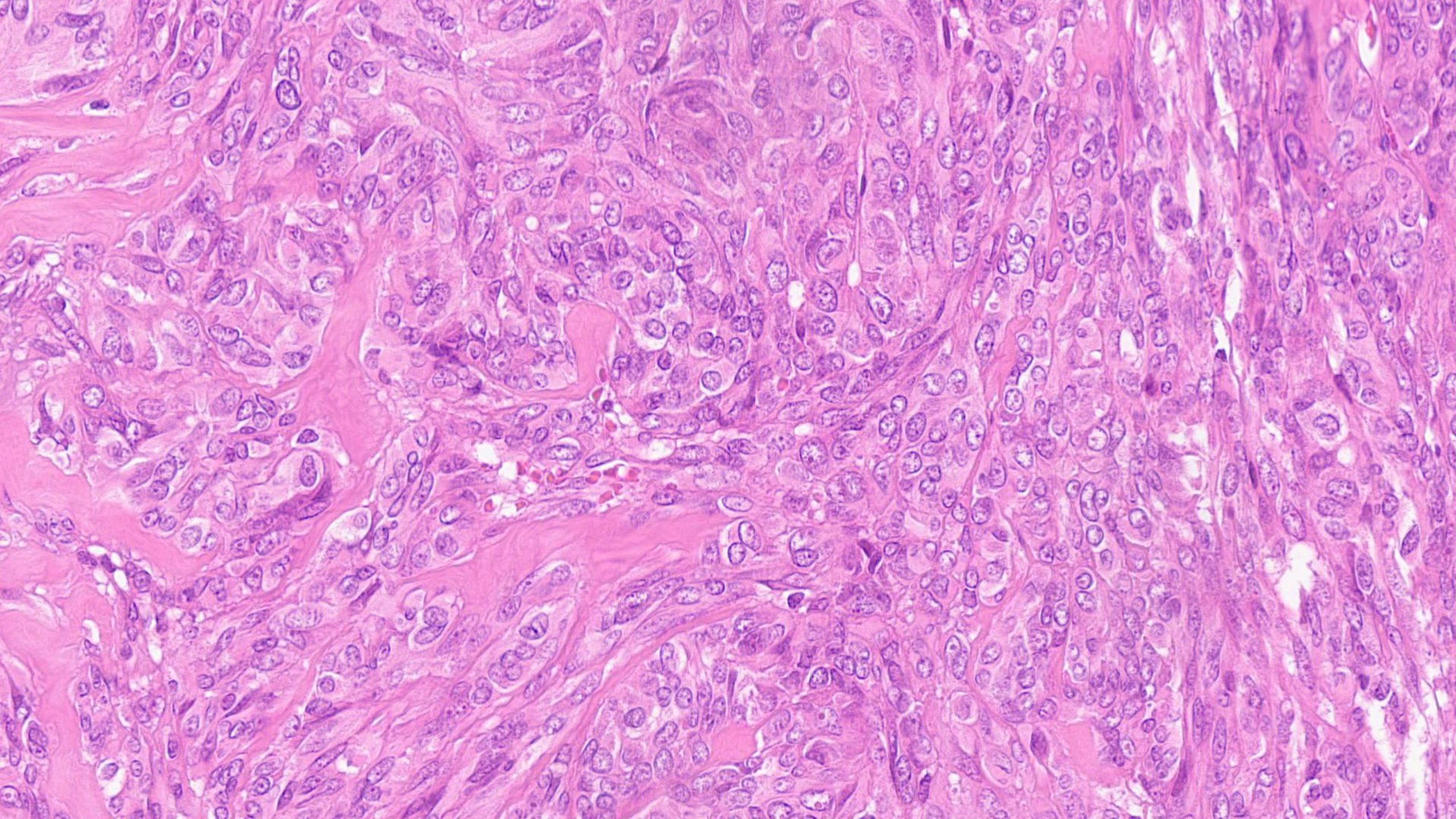


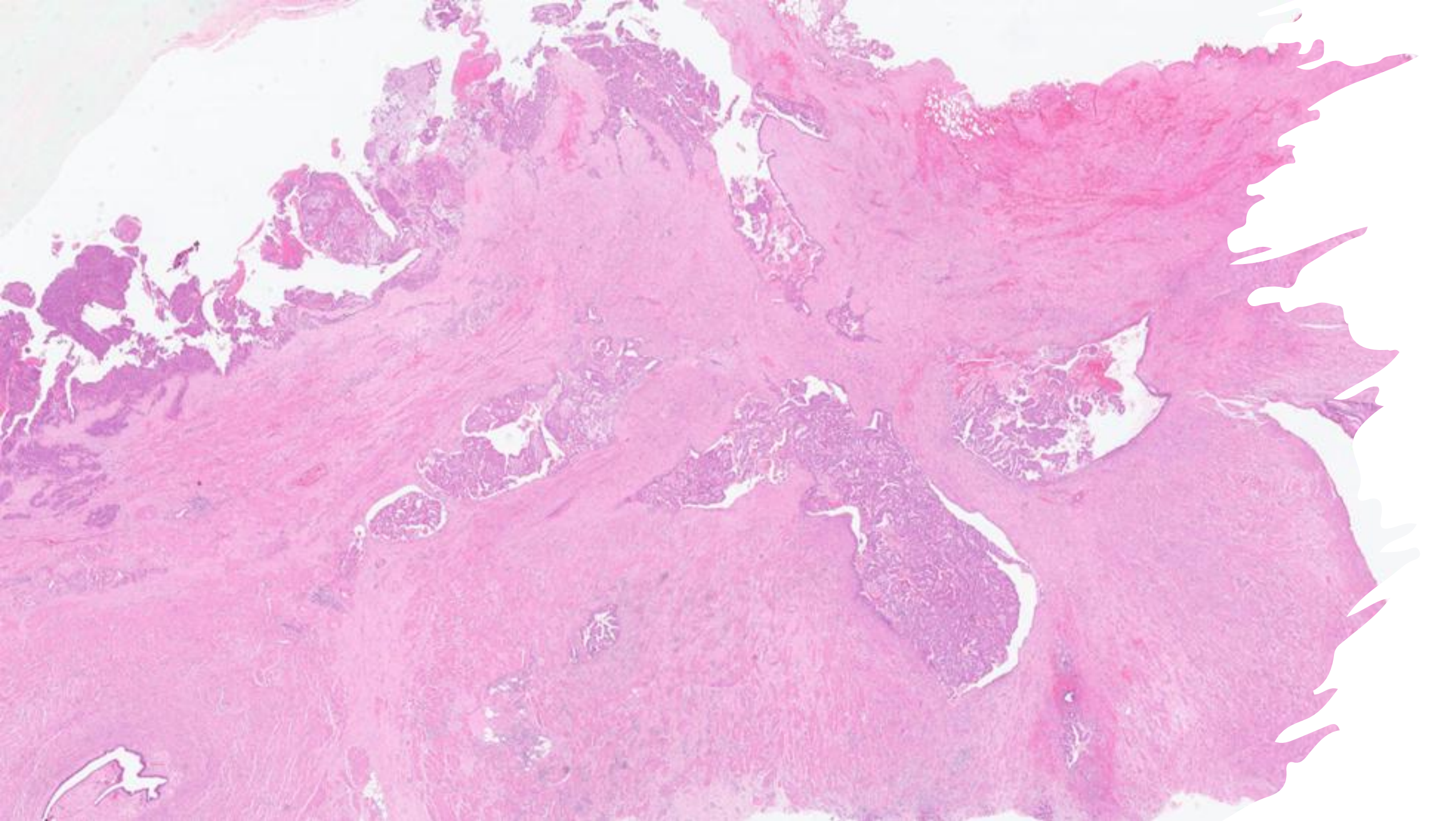
# Estudio microscópico

Tumoración ovárica  
izquierda de 12x9  
cm

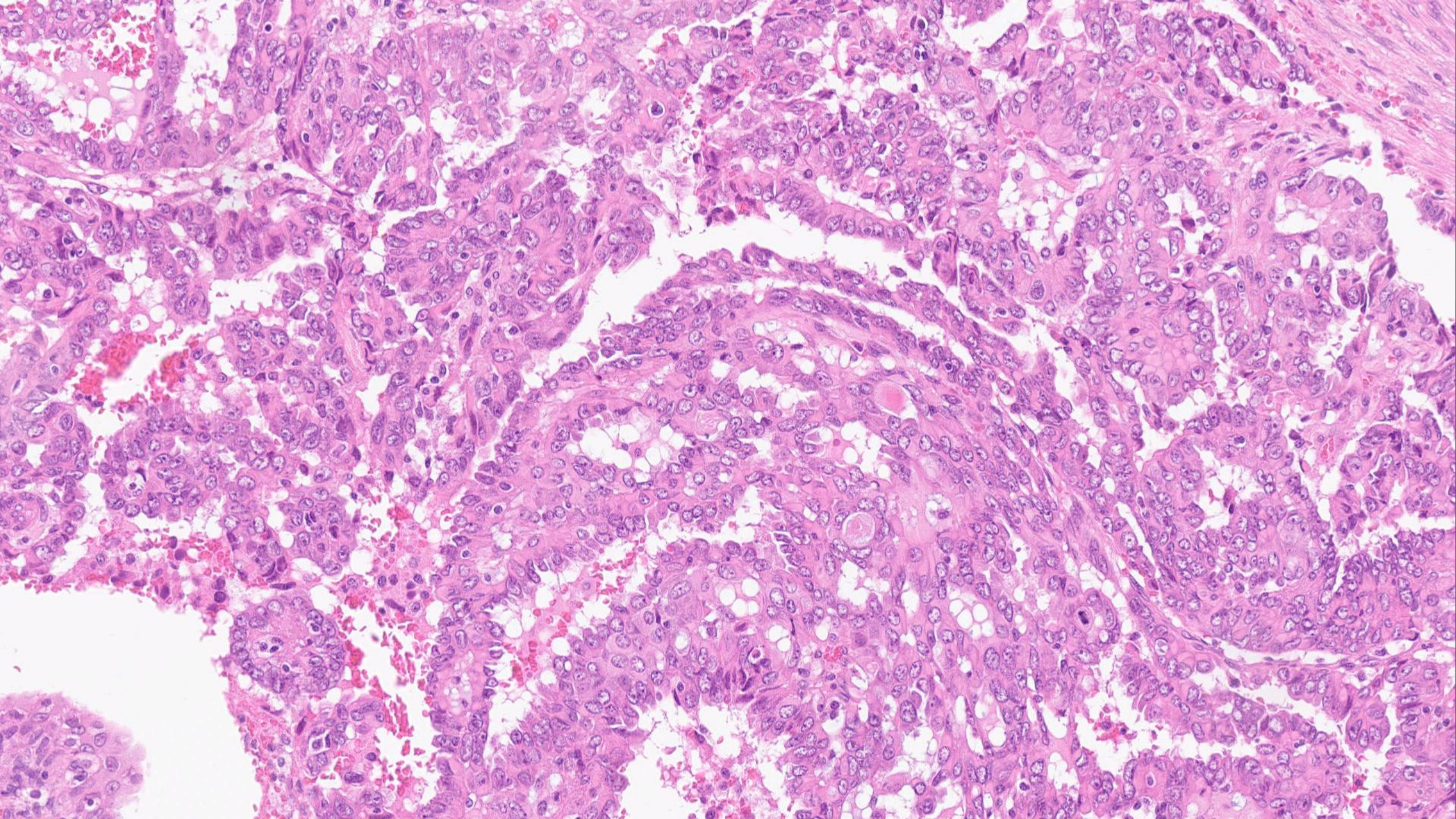


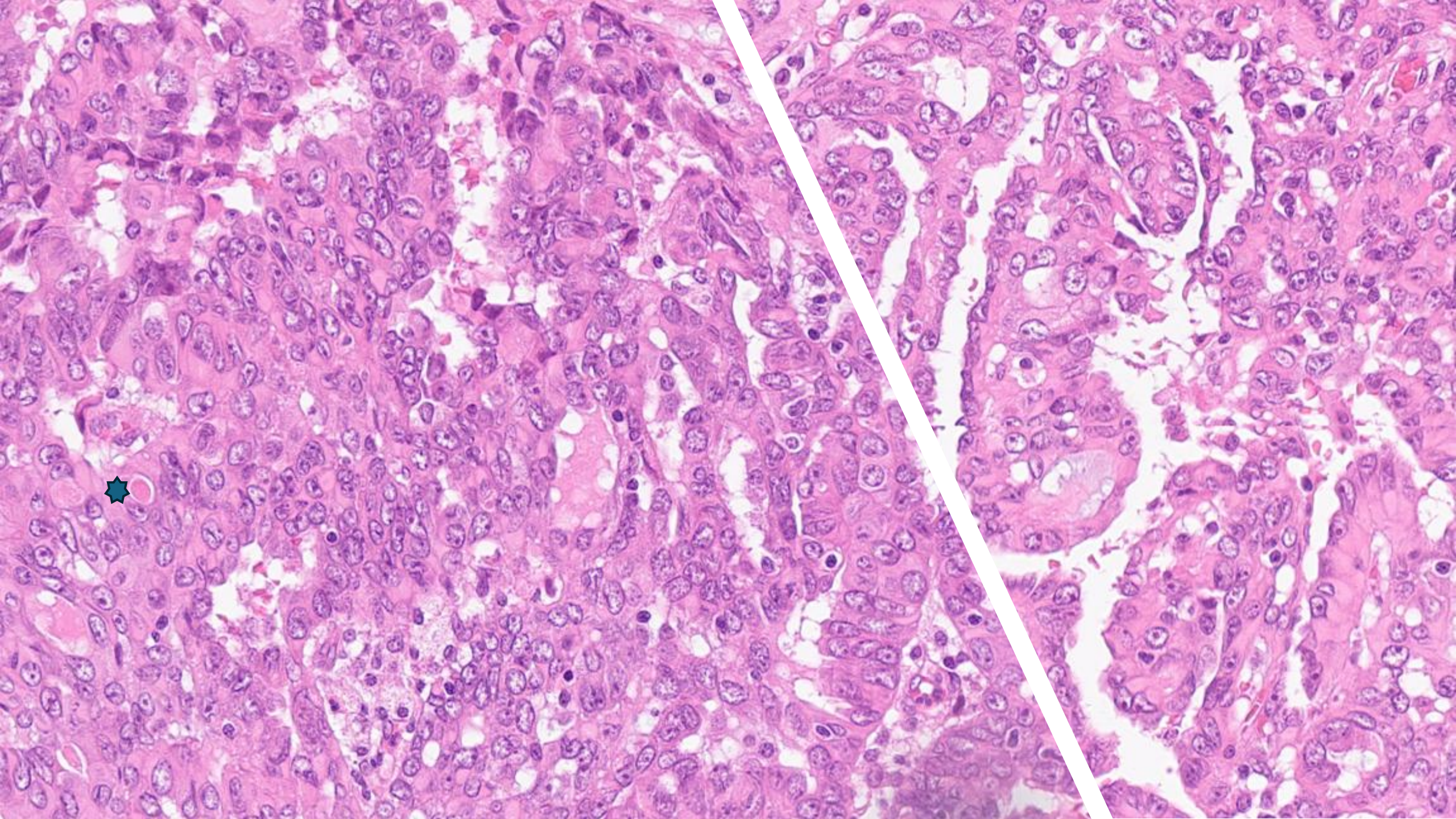


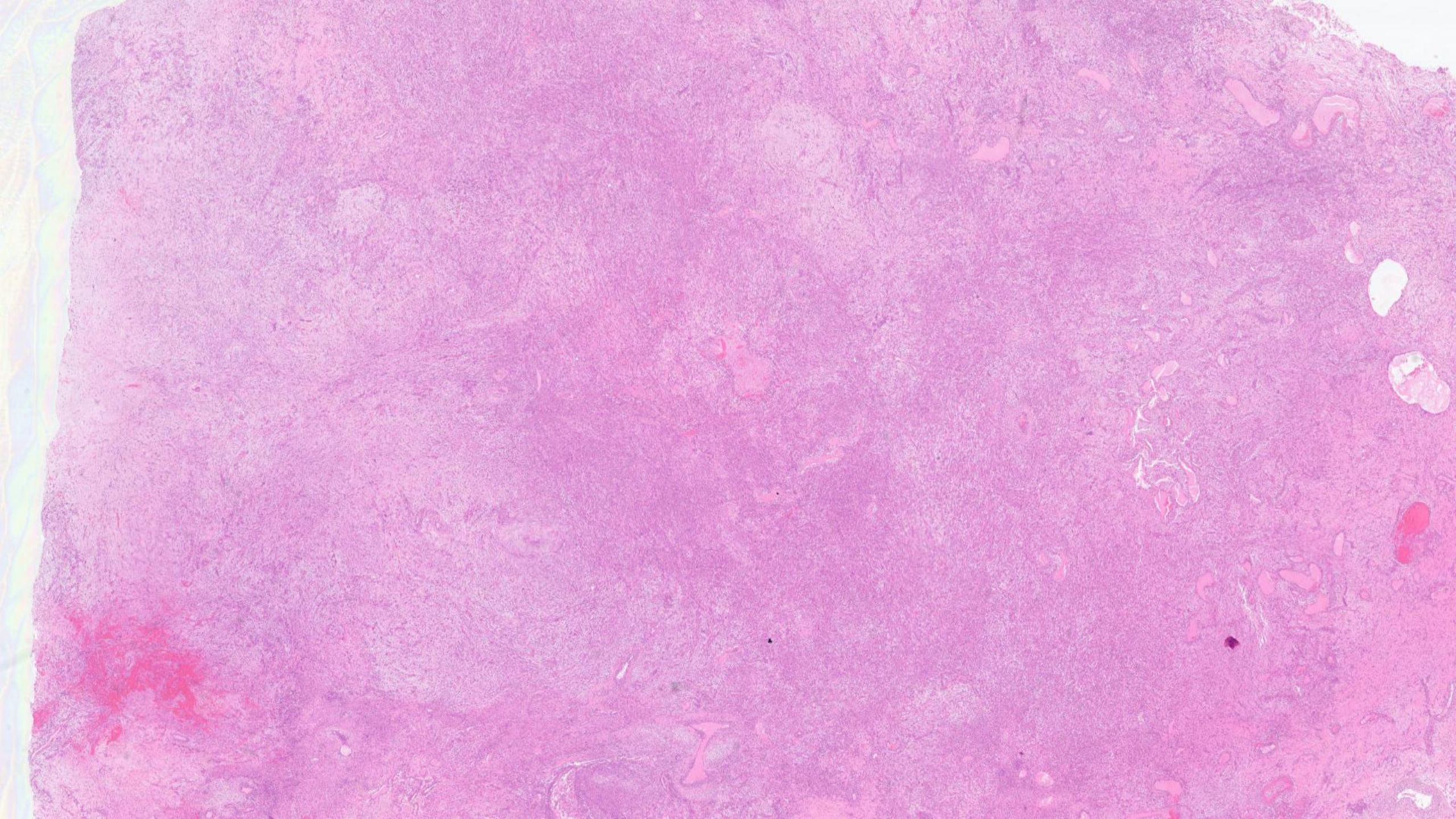


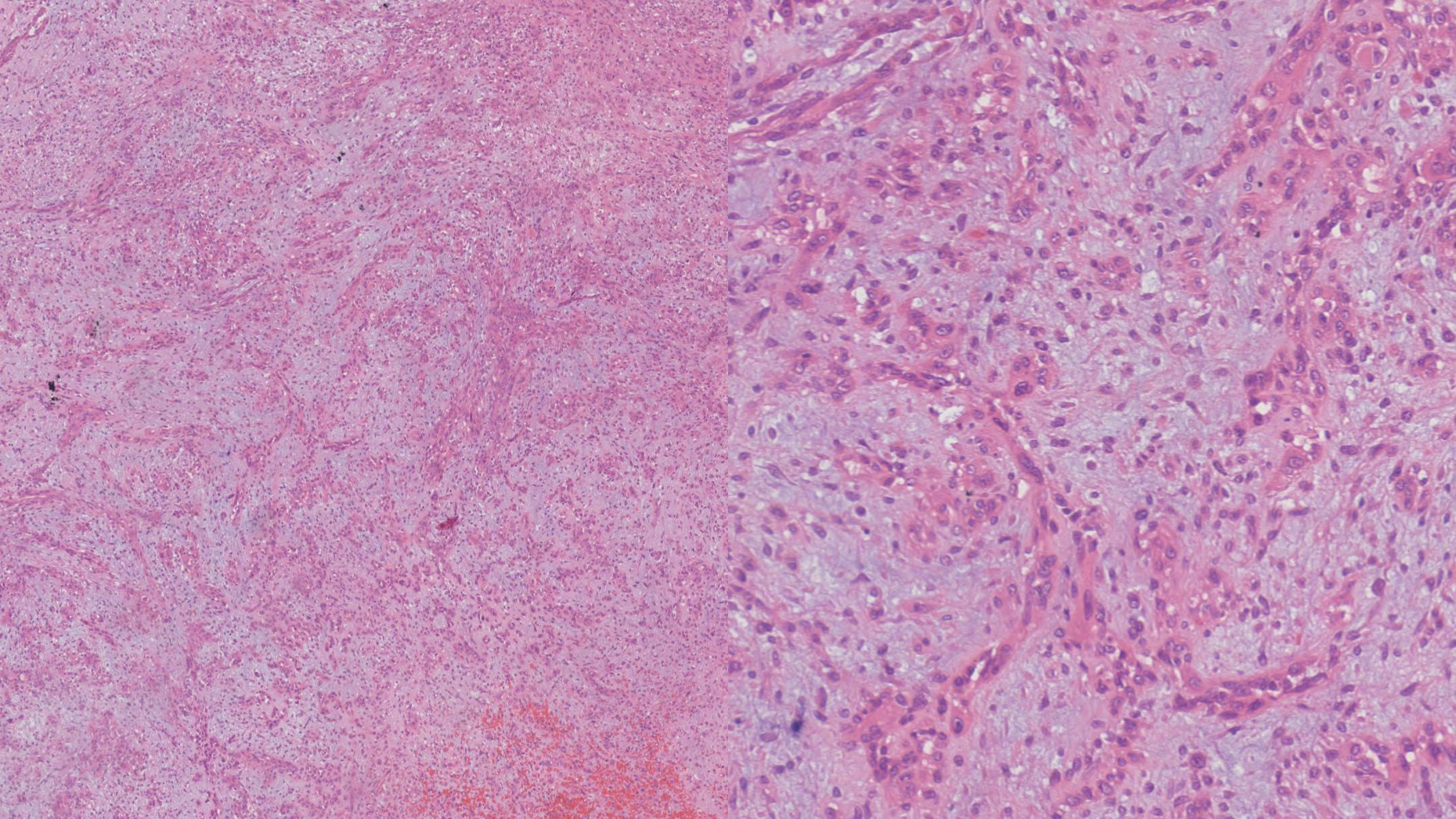


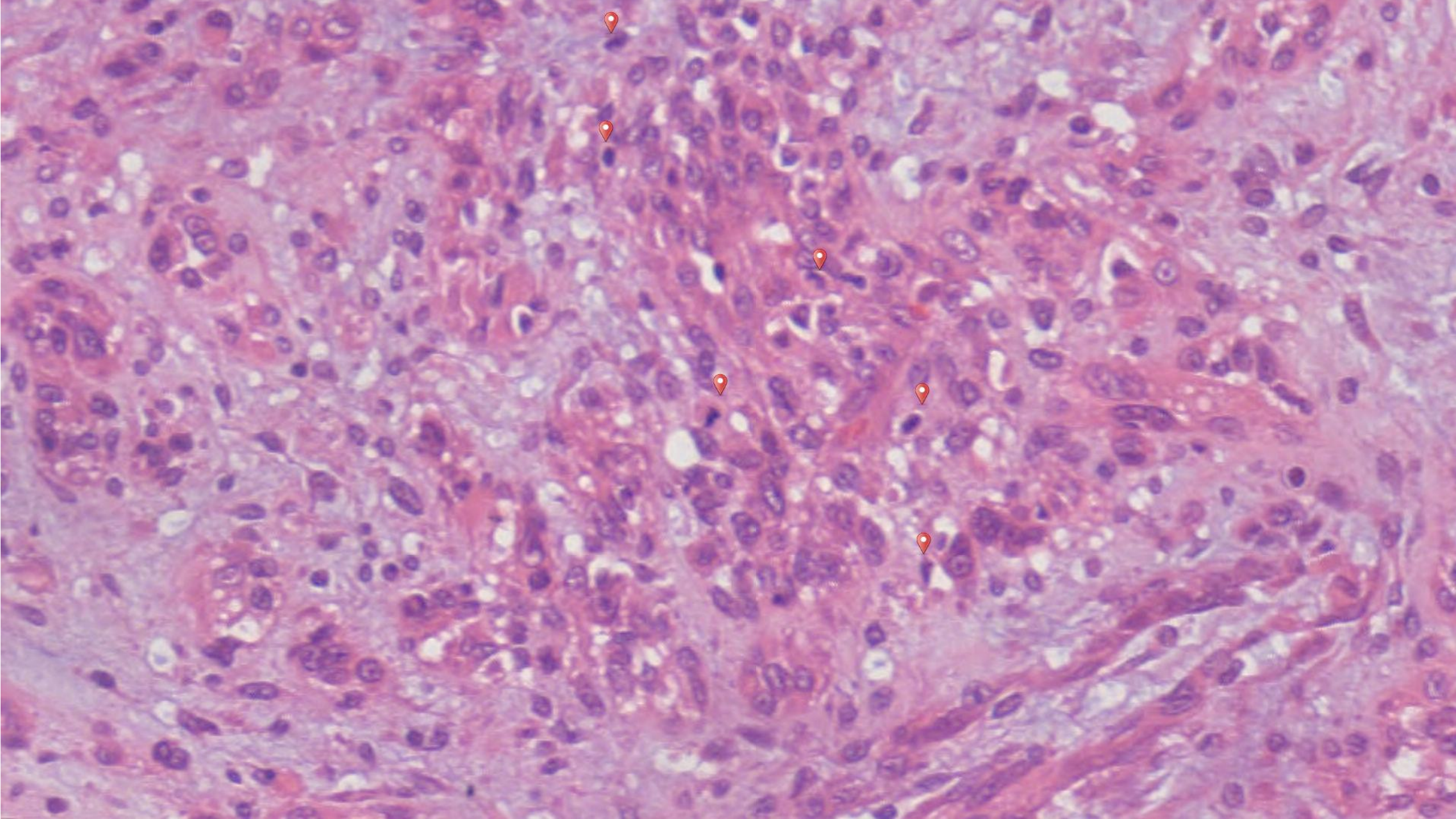






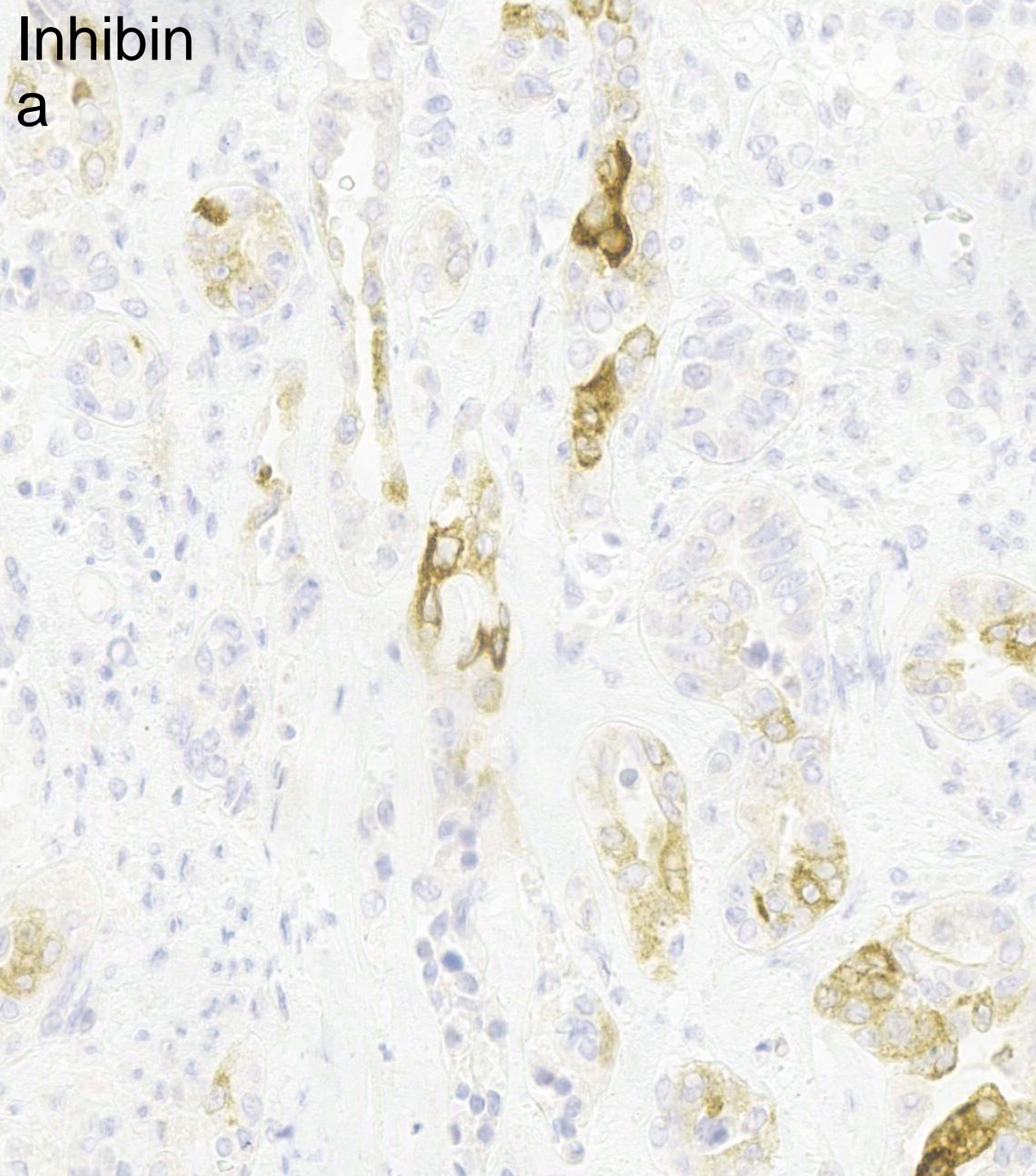




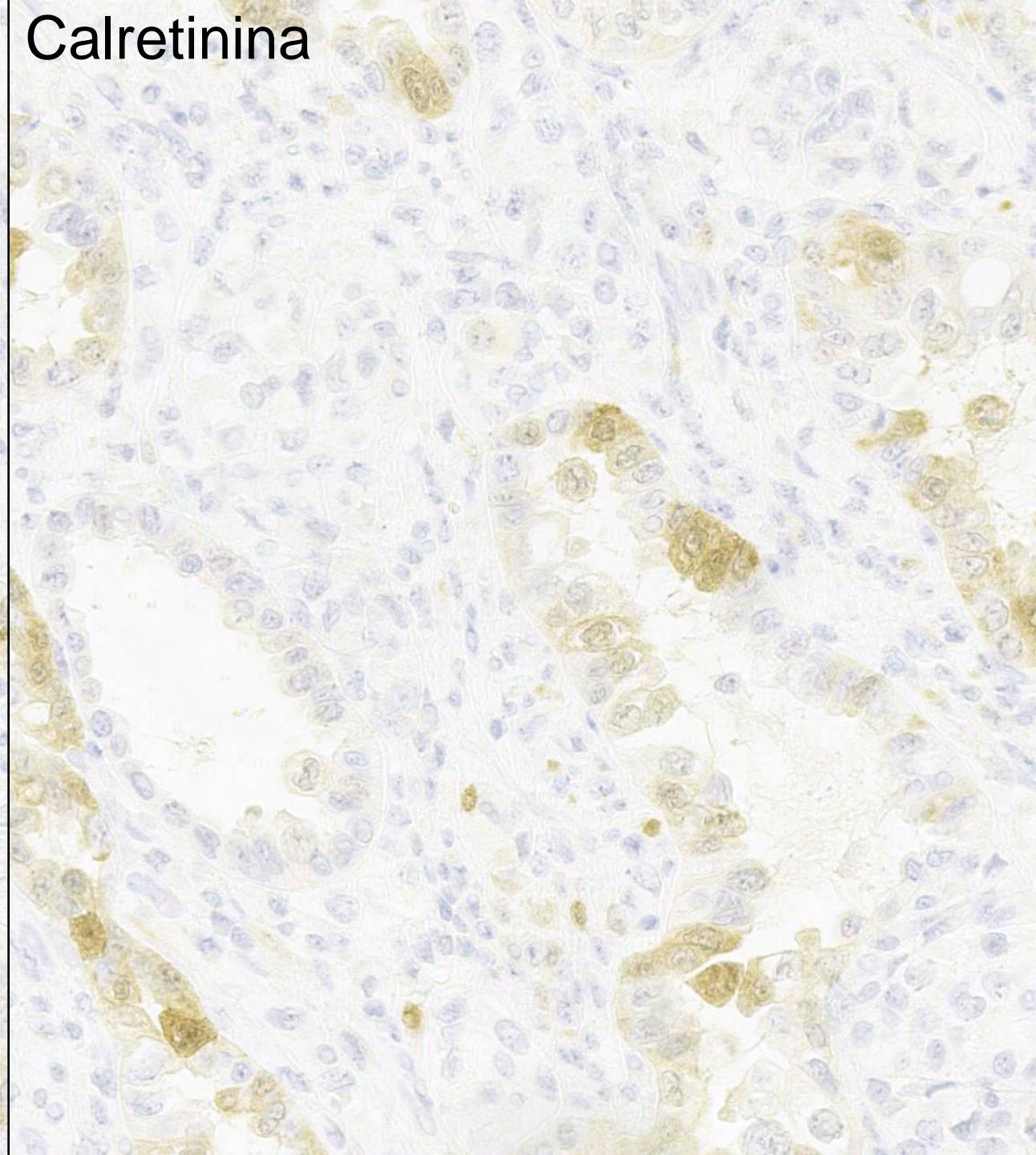


# Estudio inmunohistoquímico

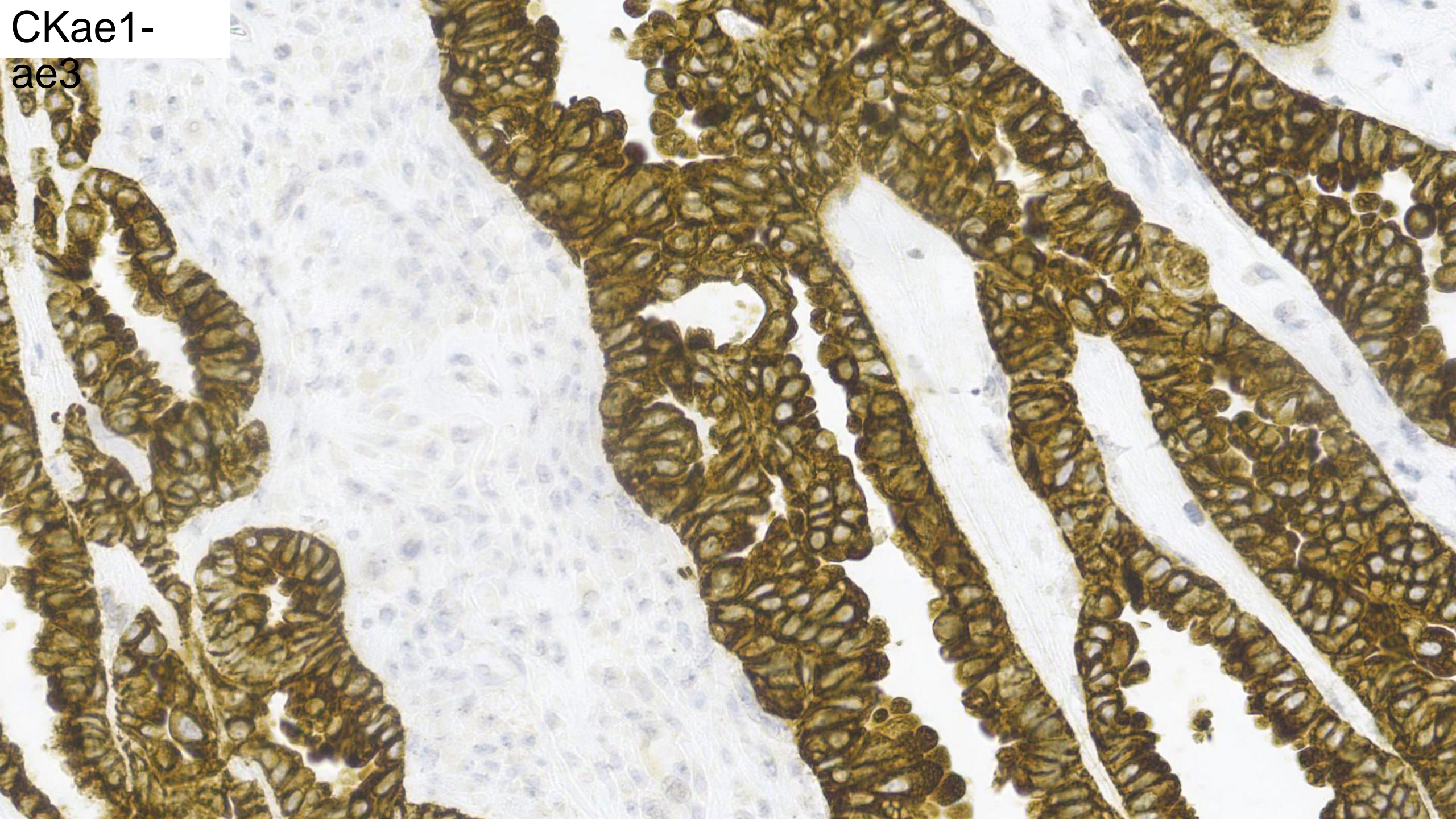
Inhibin  
a



Calretinina

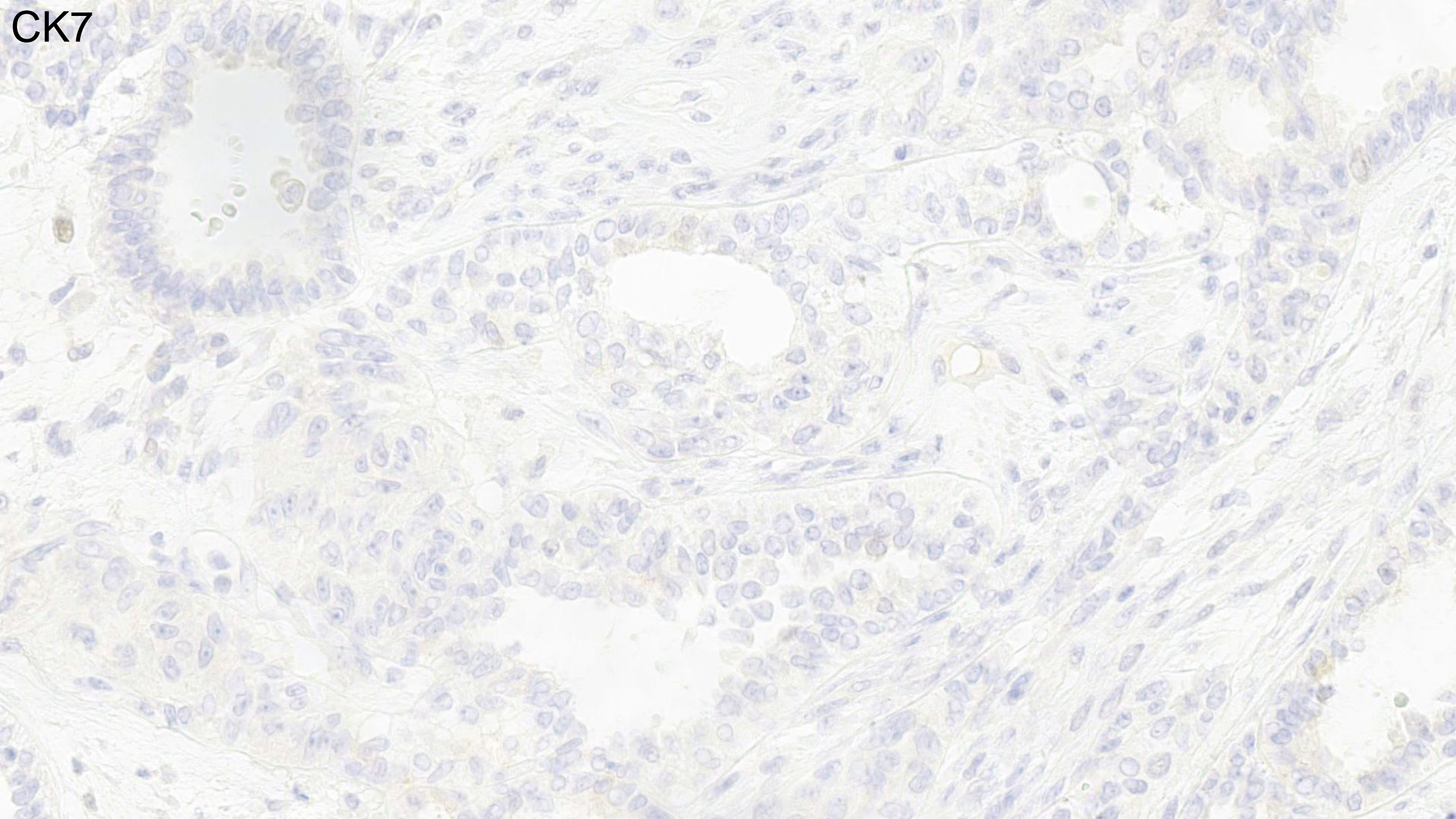


CKae1-  
ae3





CK7



# Diagnóstico definitivo

## Tumor de células de Sertoli-Leyding con elementos

> [Cancer](#). 1982 Dec 1;50(11):2465-75.

doi: 10.1002/1097-0142(19821201)50:11<2465::aid-cnrcr2820501135>3.0.co;2-u.

### **Ovarian Sertoli-Leydig cell tumors with heterologous elements. II. Cartilage and skeletal muscle: a clinicopathologic analysis of twelve cases**

J Prat, R H Young, R E Scully

PMID: 7139538 DOI: 10.1002/1097-0142(19821201)50:11<2465::aid-cnrcr2820501135>3.0.co;2-u

[Review](#) > [Pediatr Blood Cancer](#). 2020 Oct;67(10):e28621. doi: 10.1002/pbc.28621.

Epub 2020 Jul 30.

### **Pediatric ovarian Sertoli-Leydig cell tumors with heterologous rhabdomyosarcoma elements: Clinical case series and review of the literature**

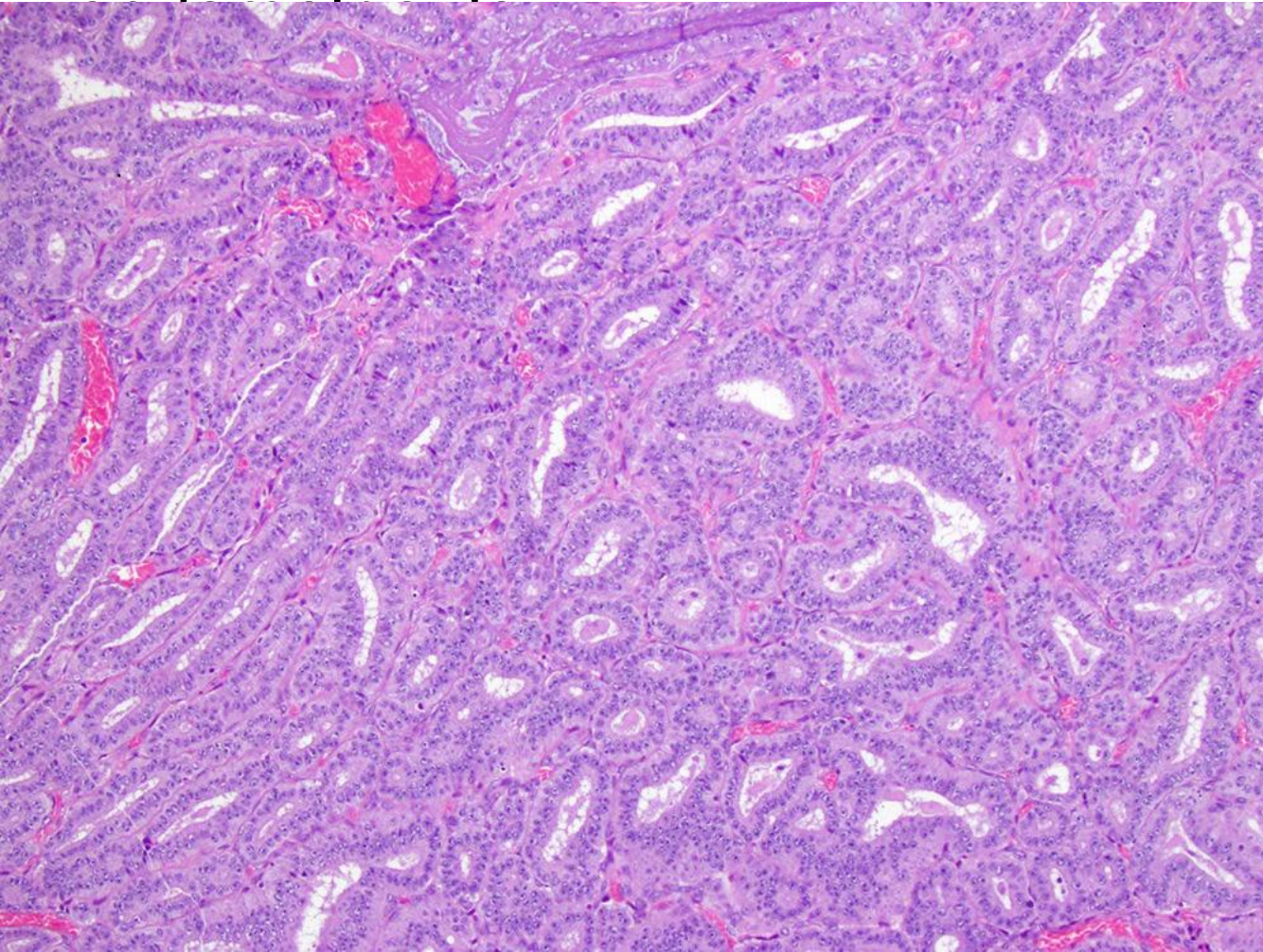
Jane Koo <sup>1</sup>, Timothy P Garrington <sup>1</sup>, Karol Kerr <sup>1</sup>, Amy L Treece <sup>2</sup>, Carrye R Cost <sup>1</sup>

Affiliations + expand

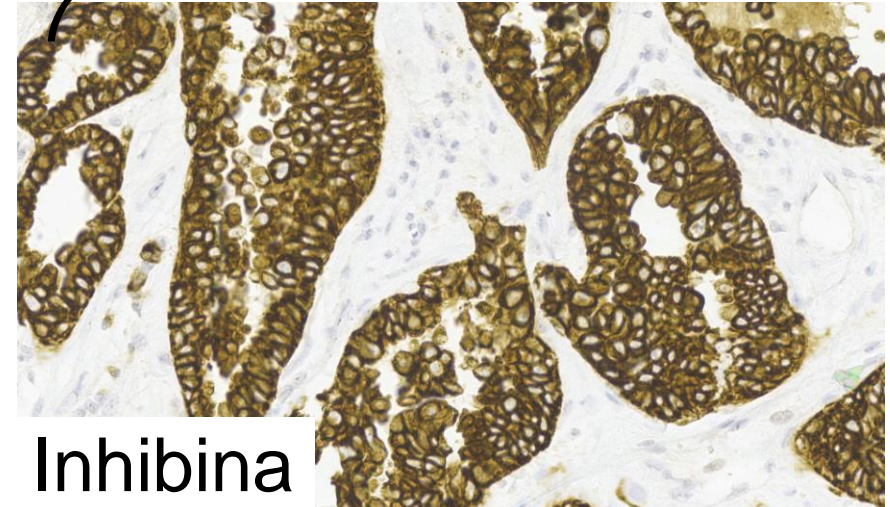
PMID: 32729194 DOI: 10.1002/pbc.28621

# Diagnóstico diferencial

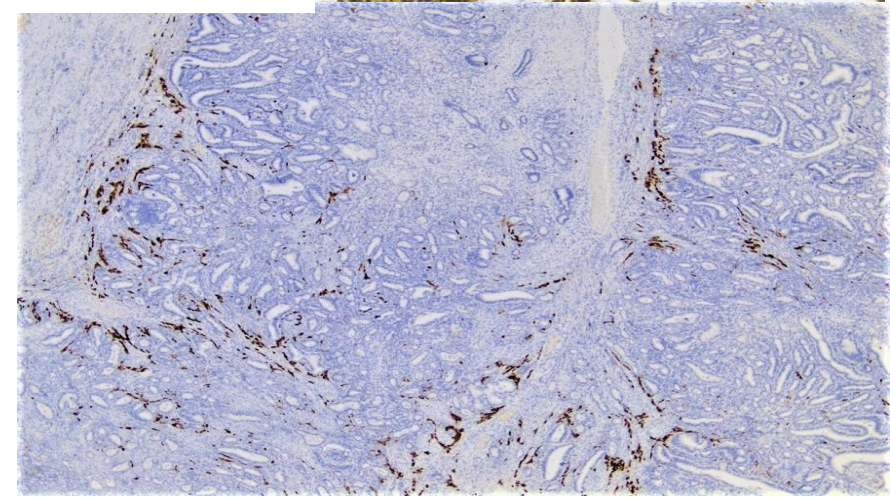
Tumor de células de Sertoli-Leyding  
Adenocarcinoma



CK  
7



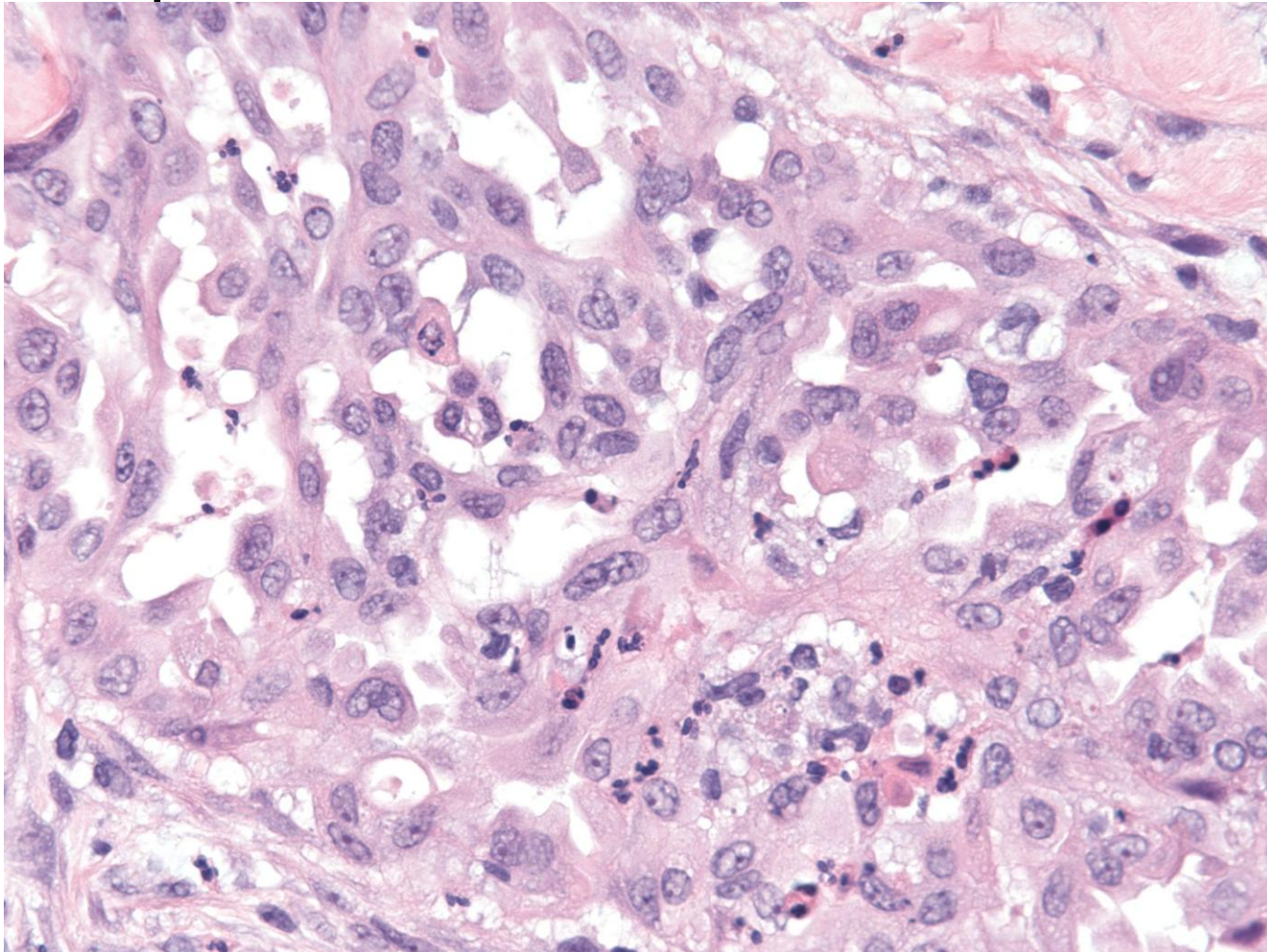
Inhibina



# Diagnóstico diferencial

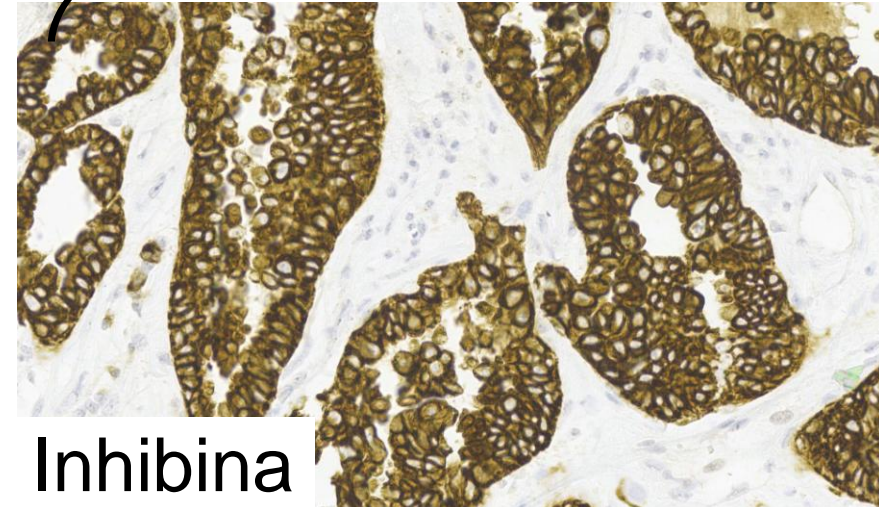
Tumor de células de Sertoli-Leyding

Tumores serosos de bajo

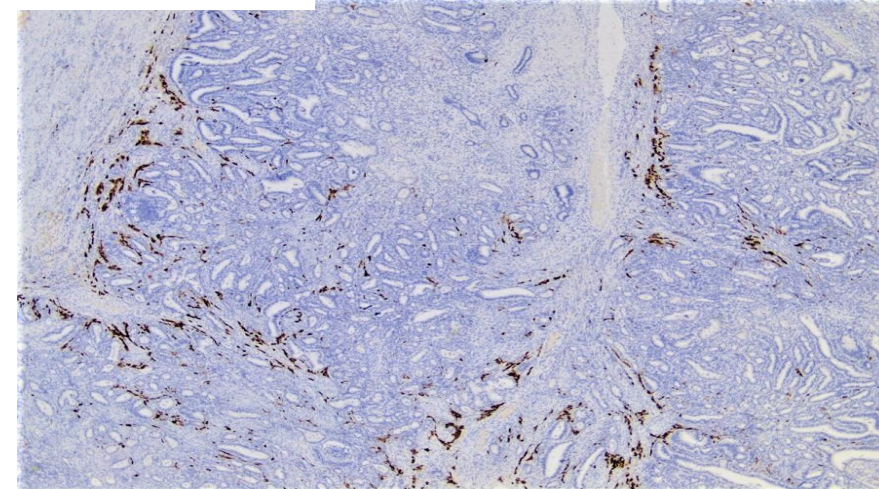


CK

7

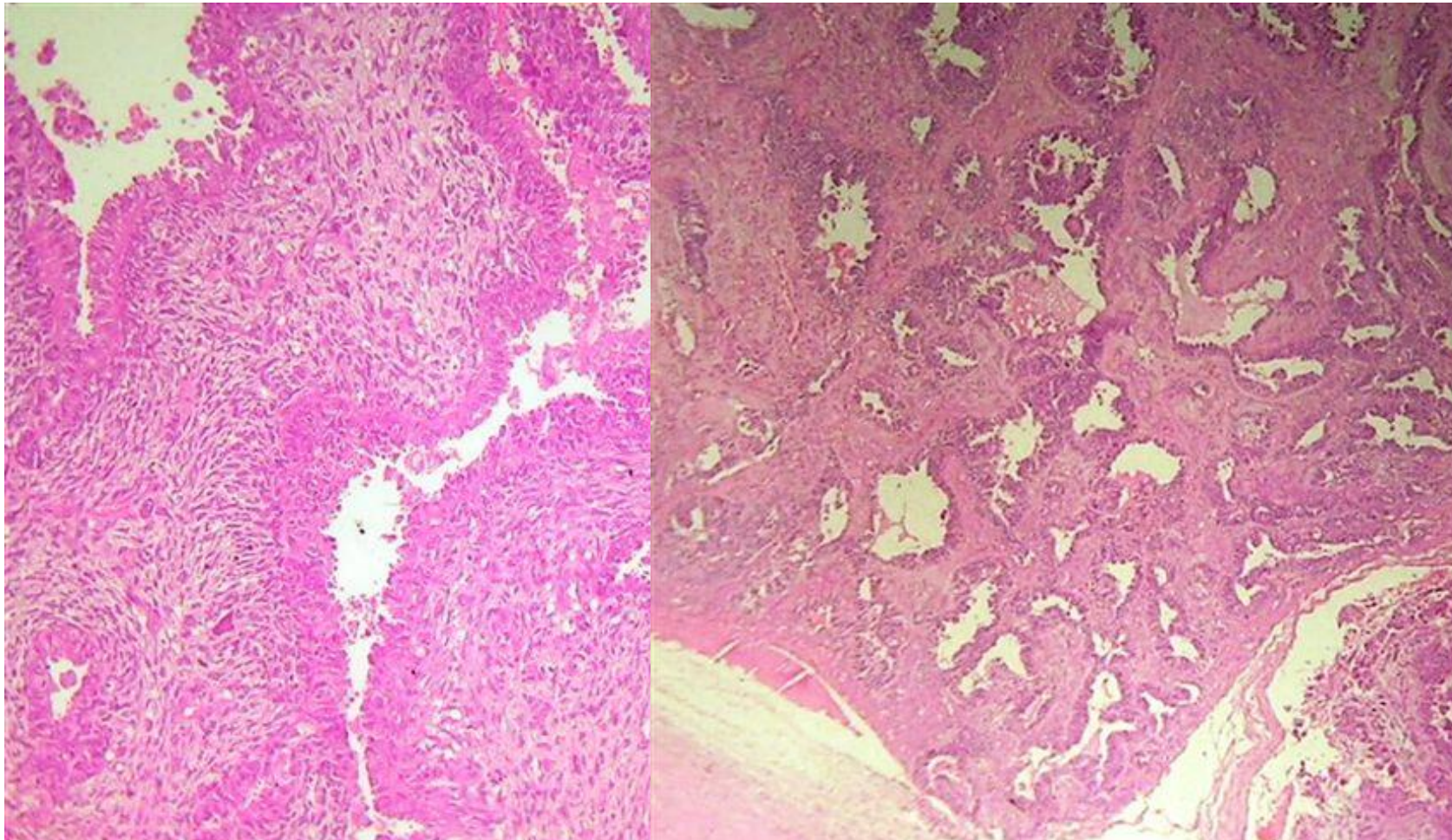


Inhibina

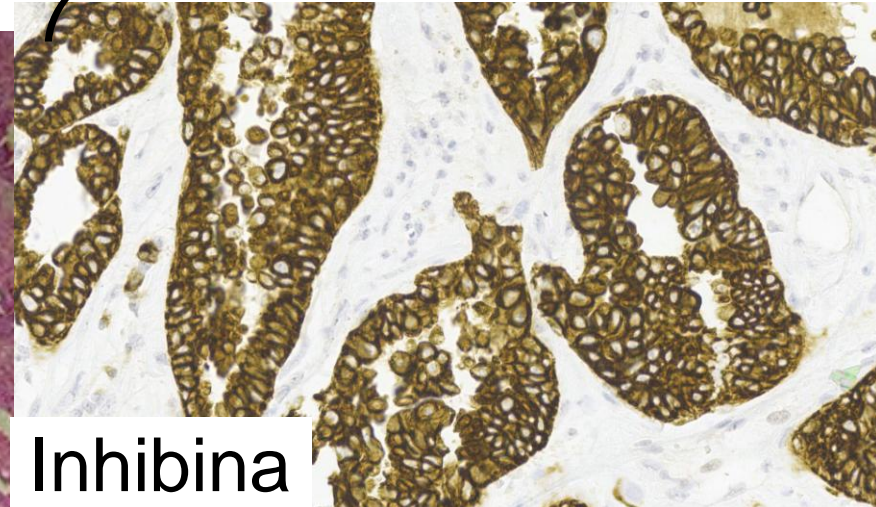


# Diagnóstico diferencial

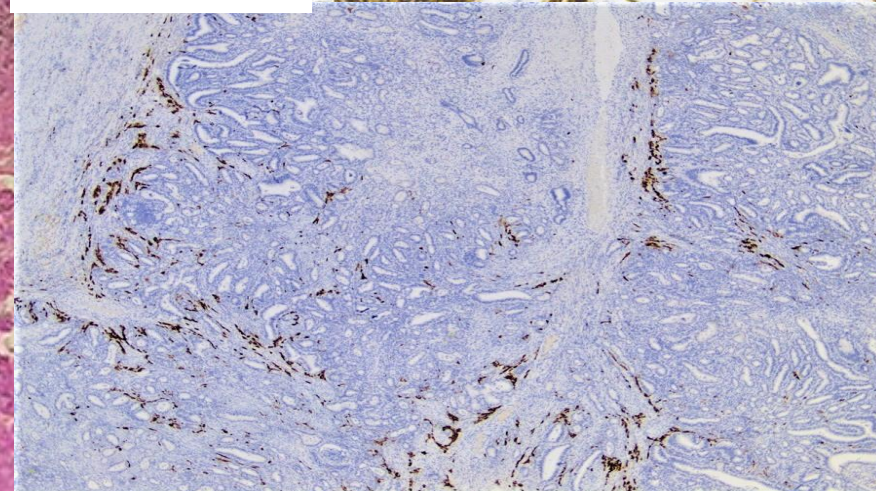
Tumor de células de Sertoli-Leyding  
Carcinomasarcoma



CK  
7



Inhibina





CEU

*Universidad  
Cardenal Herrera*



# 119<sup>a</sup> REUNIÓN DE LA ASOCIACIÓN TERRITORIAL VALENCIANA DE LA SOCIEDAD ESPAÑOLA DE ANATOMIA PATOLÓGICA

Caso 6

Enrique García-Gómez

Hospital Vithas 9 de Octubre Valencia