



118ª Reunión de la Territorial Valenciana de la SEAP



CASO 7

Alessandra Benini – R3 hospital la fe

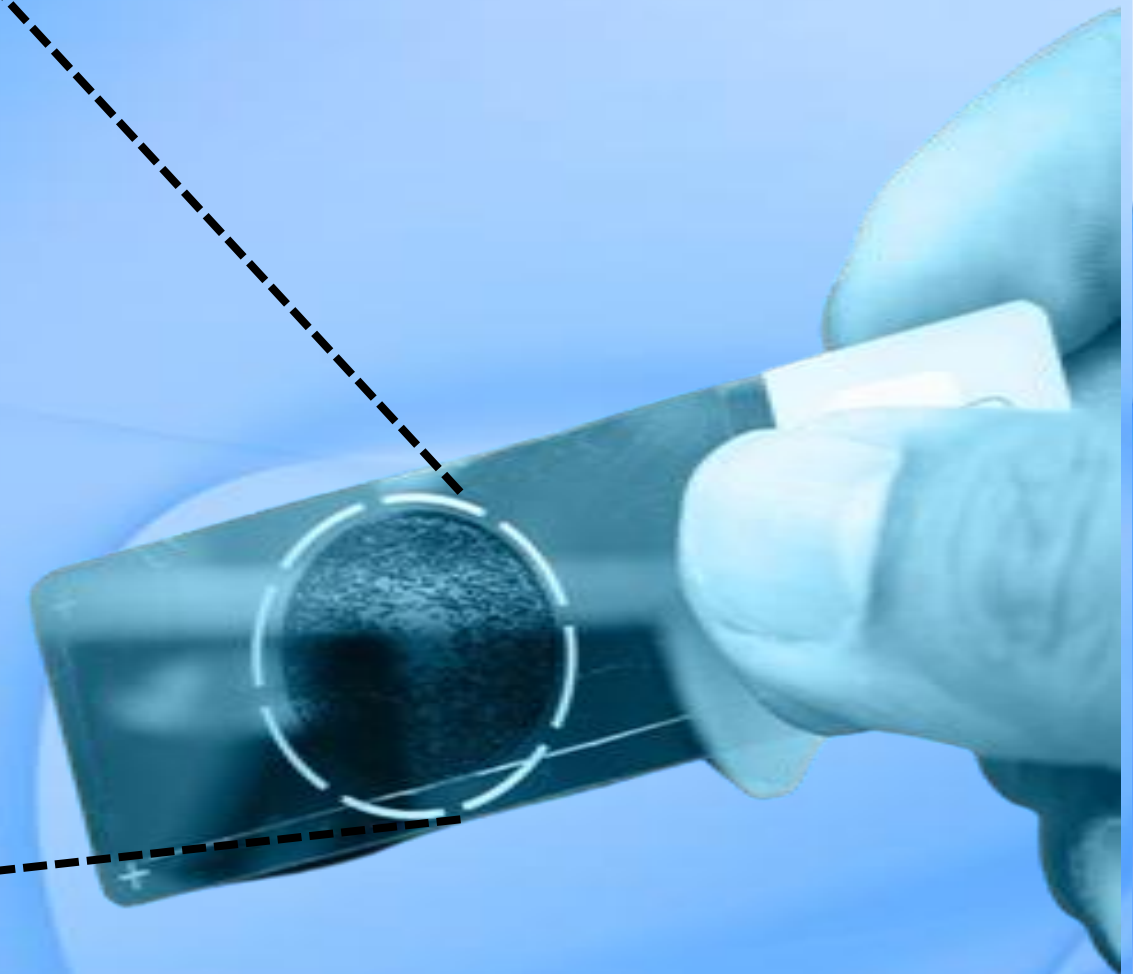
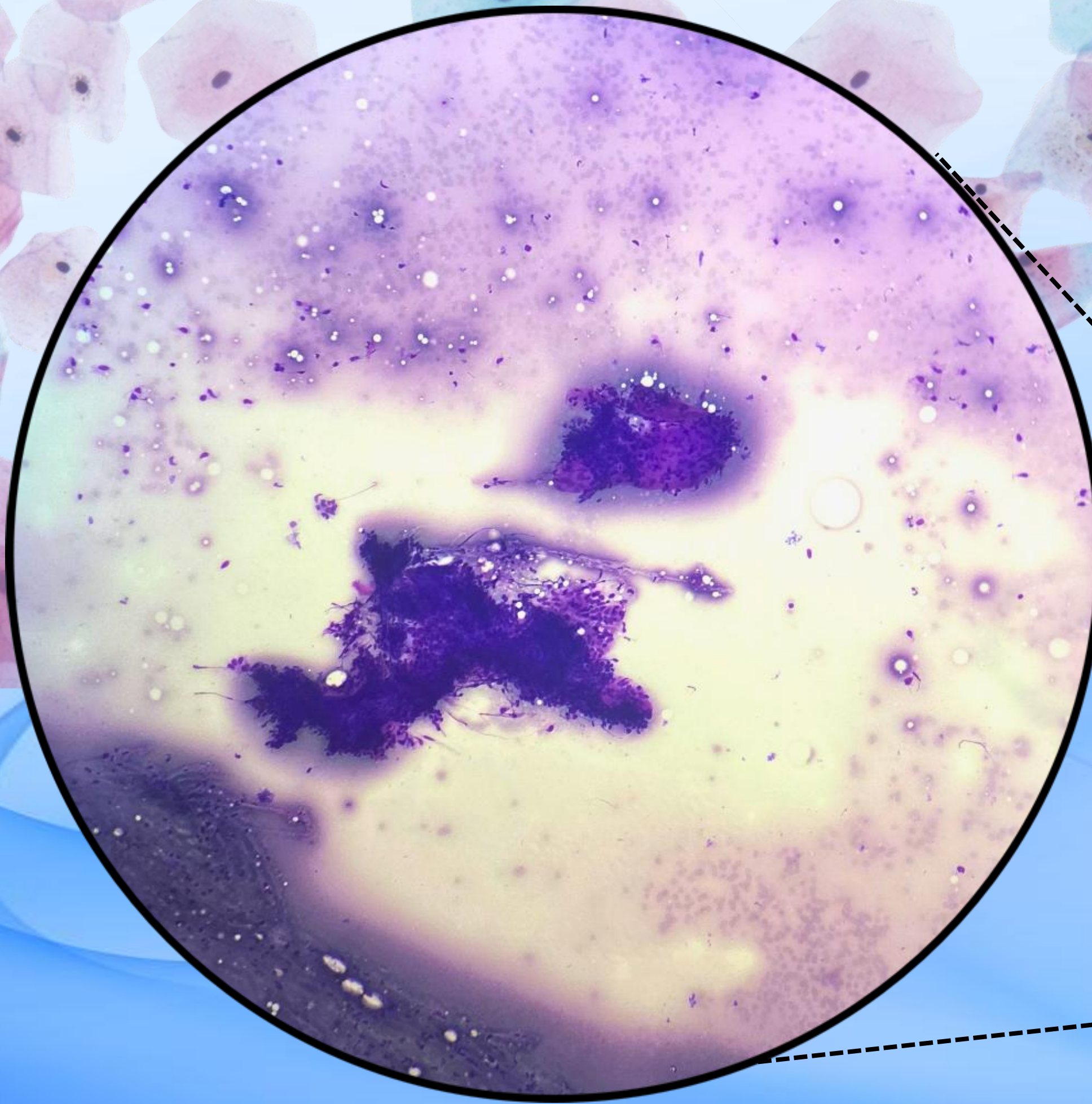
Adjuntos: Cecilia López , Carlos Zac, Mónica Bauza, Mireya Prieto.

HISTORIA CLÍNICA

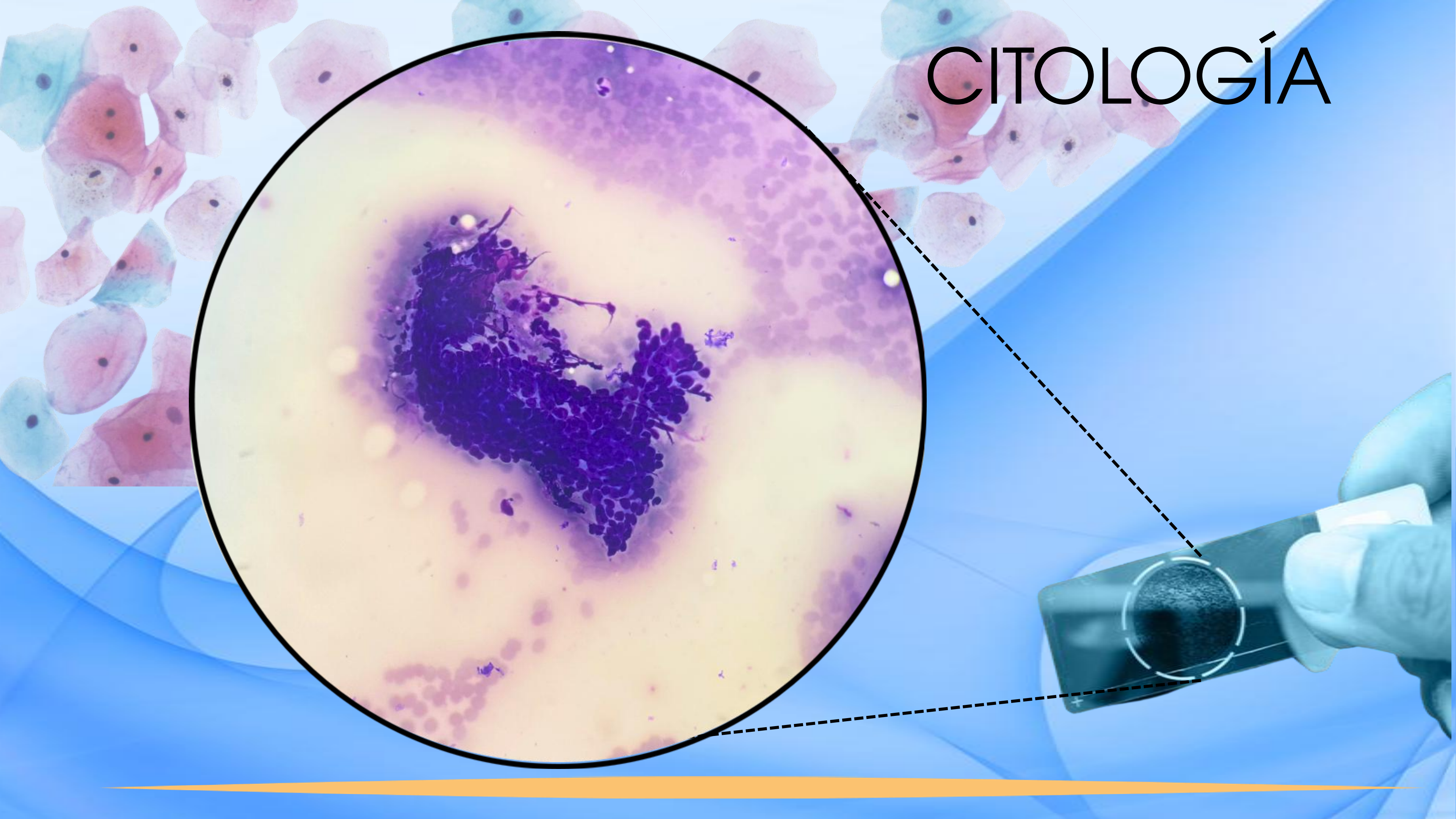
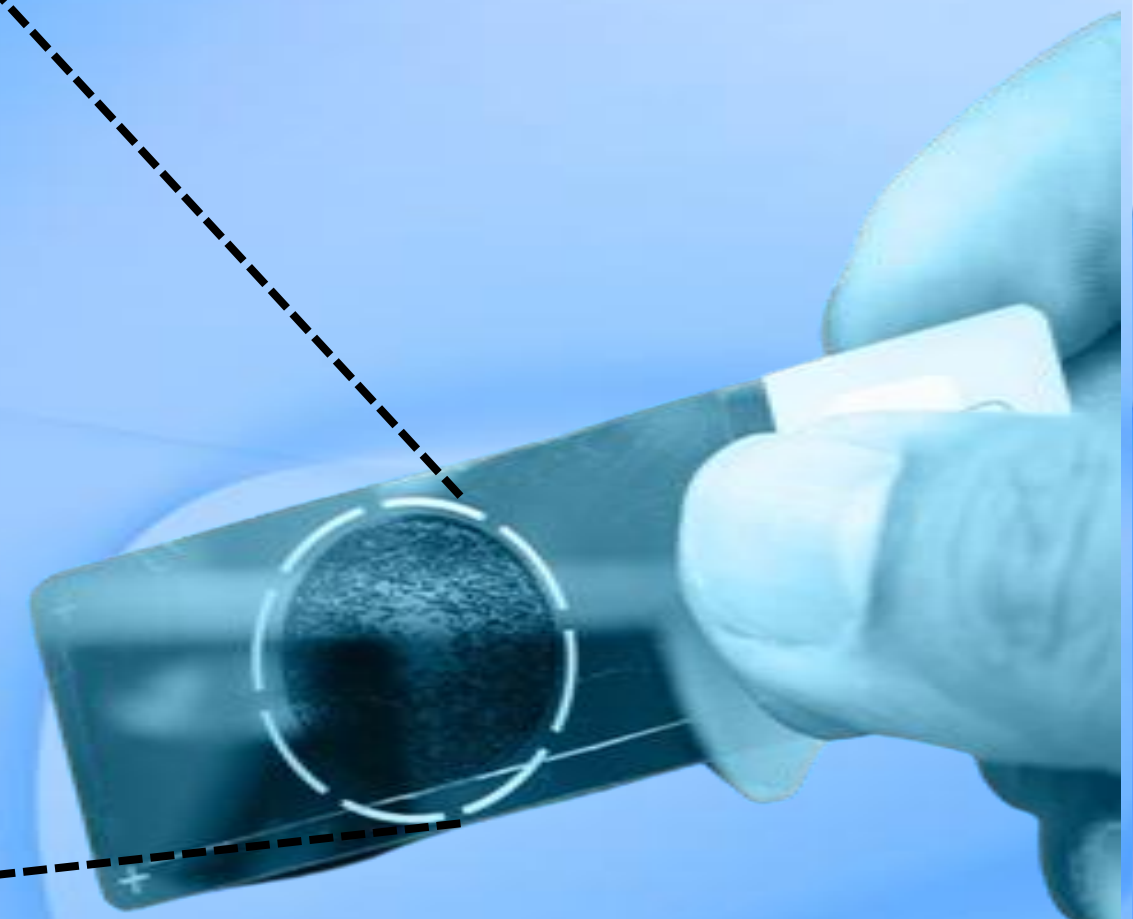
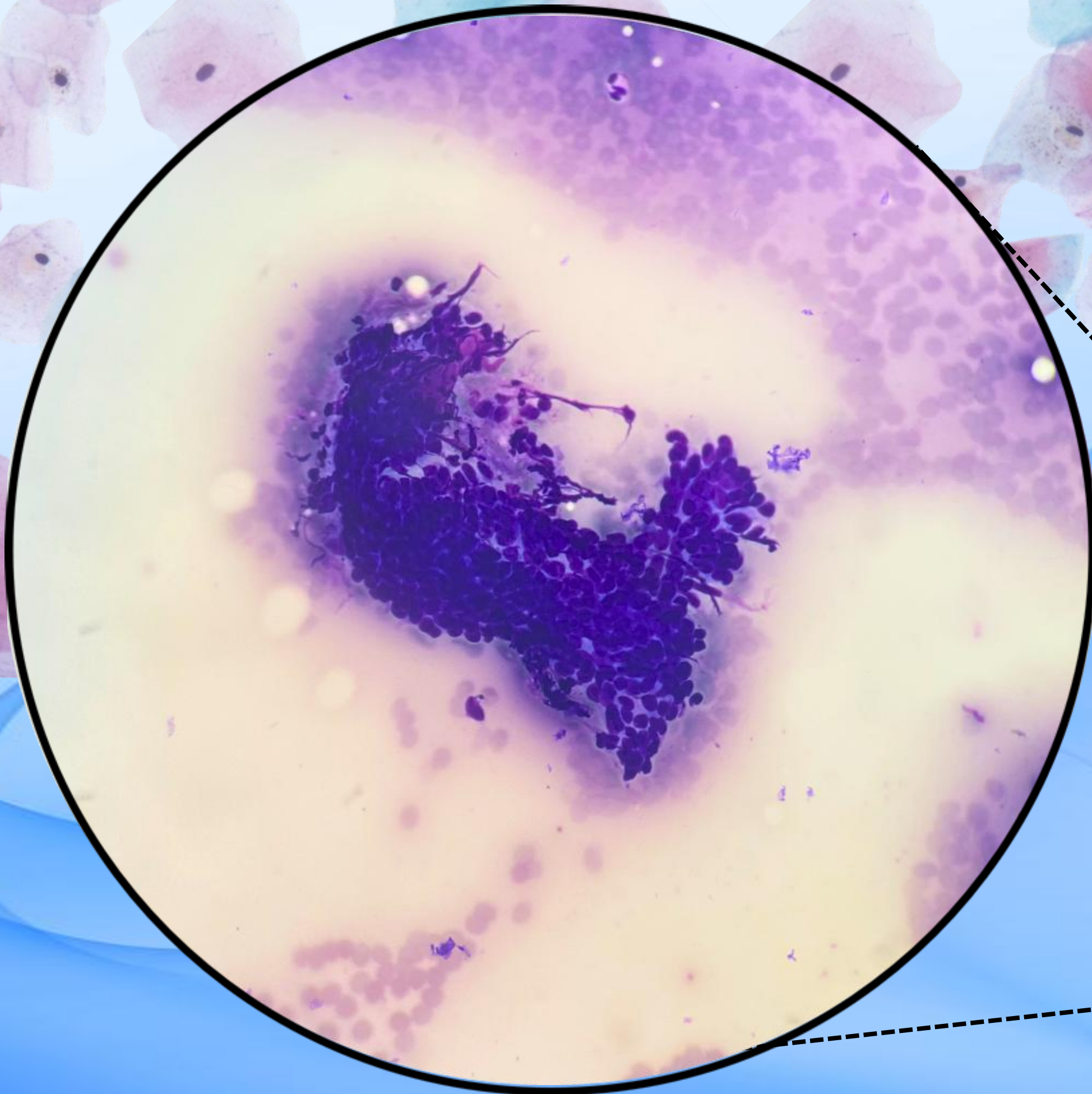
- F 65 años con nódulo PD en Agosto 2017, dx por imagen.
- Aumento de tamaño progresivo
→ palpable
- RM: nódulo superficial, PD, hipointenso en T1, moderadamente hiperintenso en T2, bien delimitado no infiltrante.
- PAAF ecoguiada



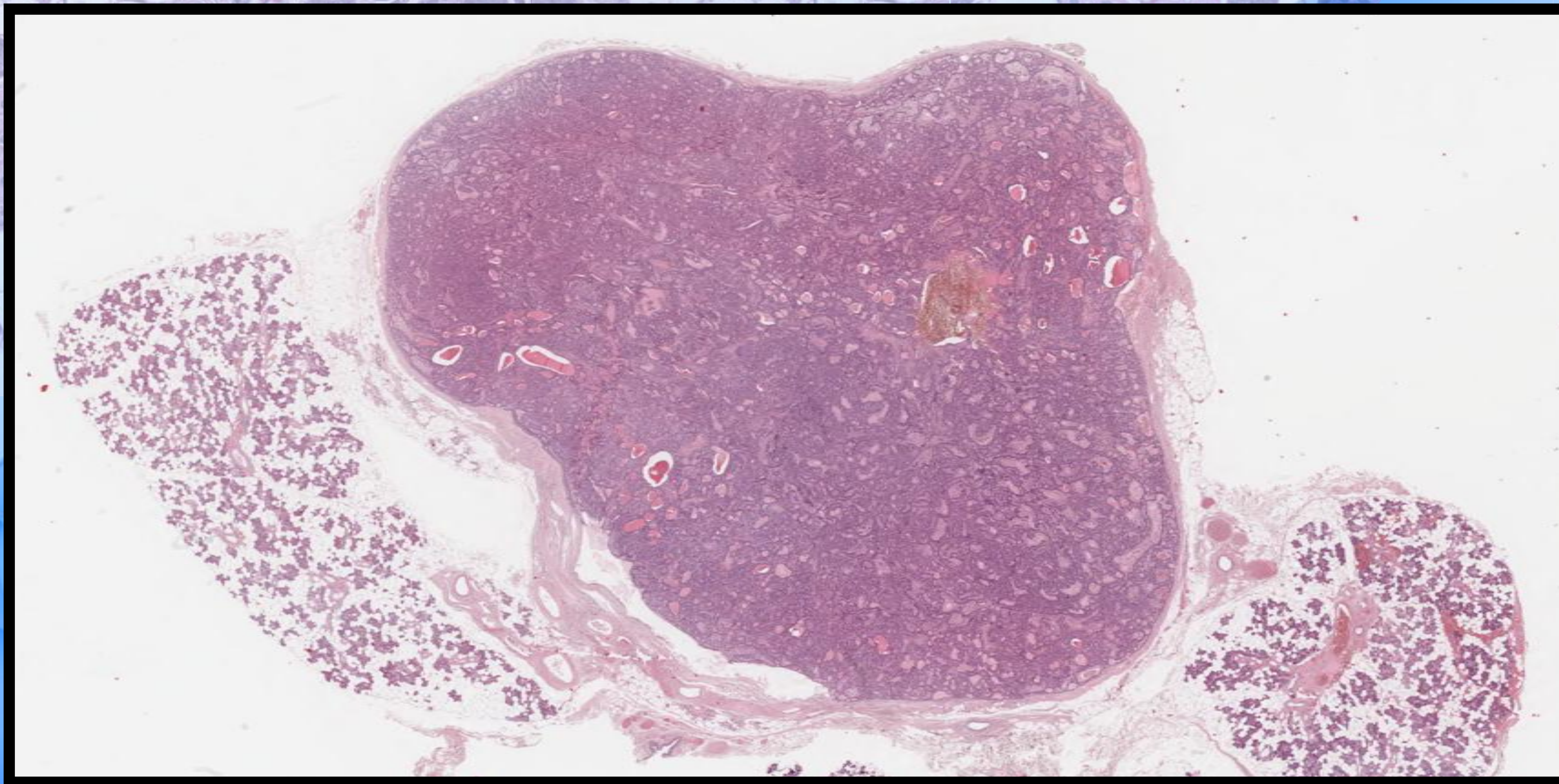
CITOLOGÍA



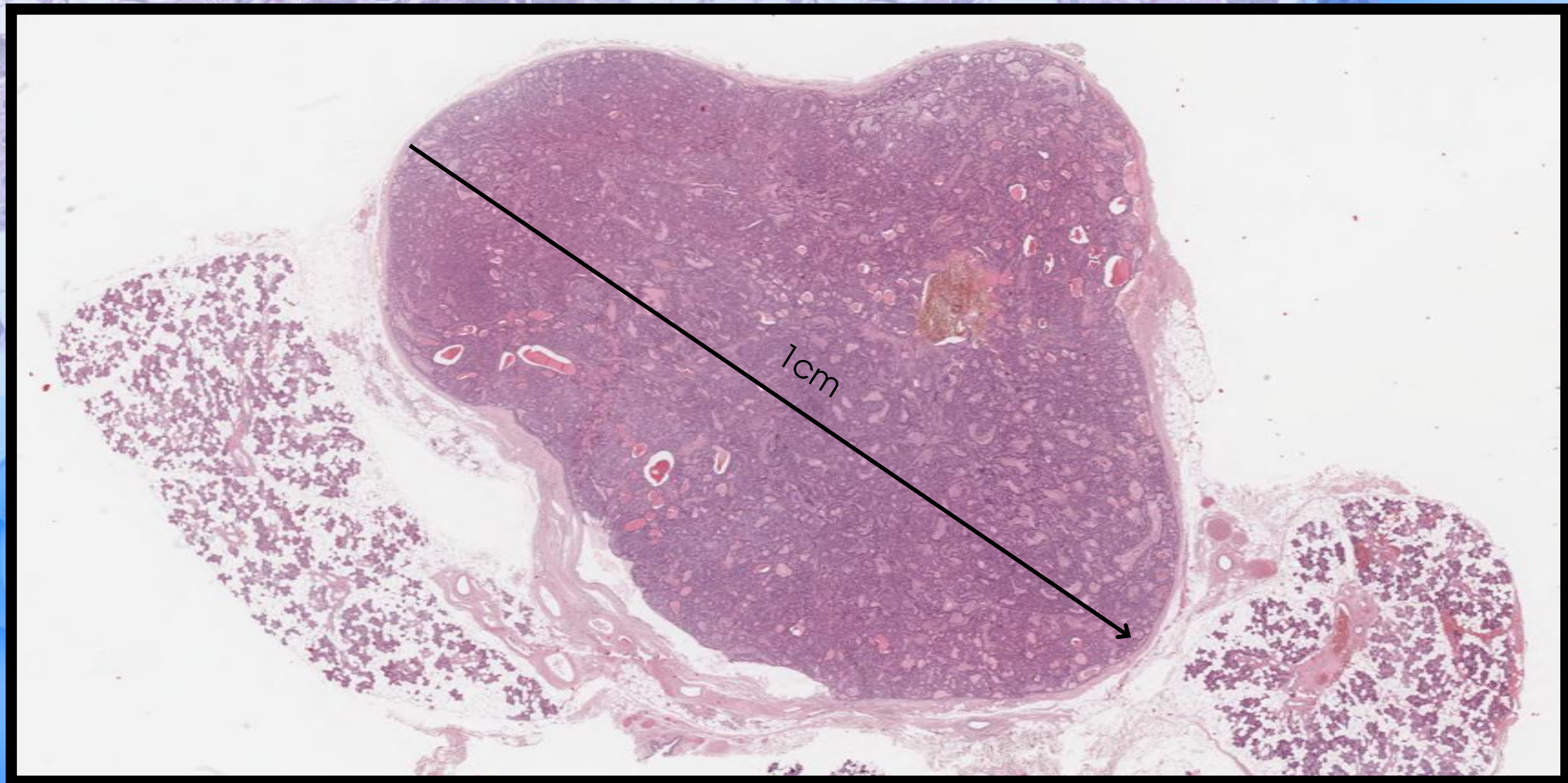
CITOLOGÍA



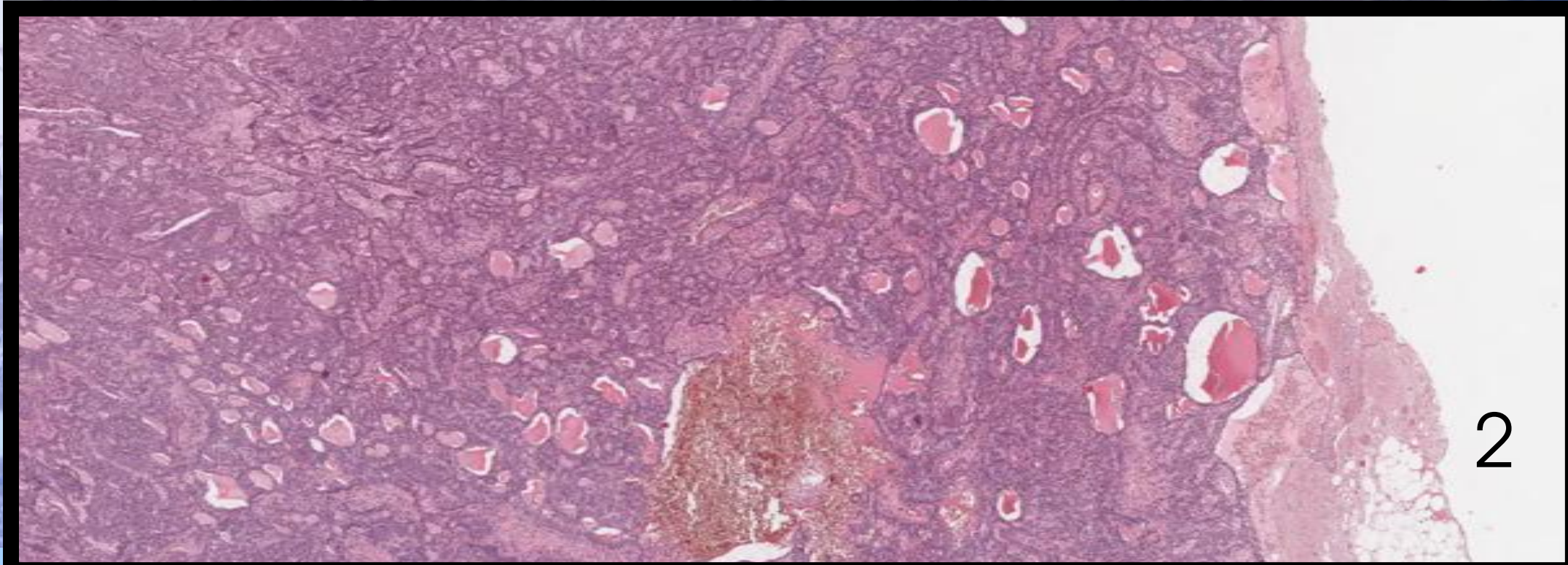
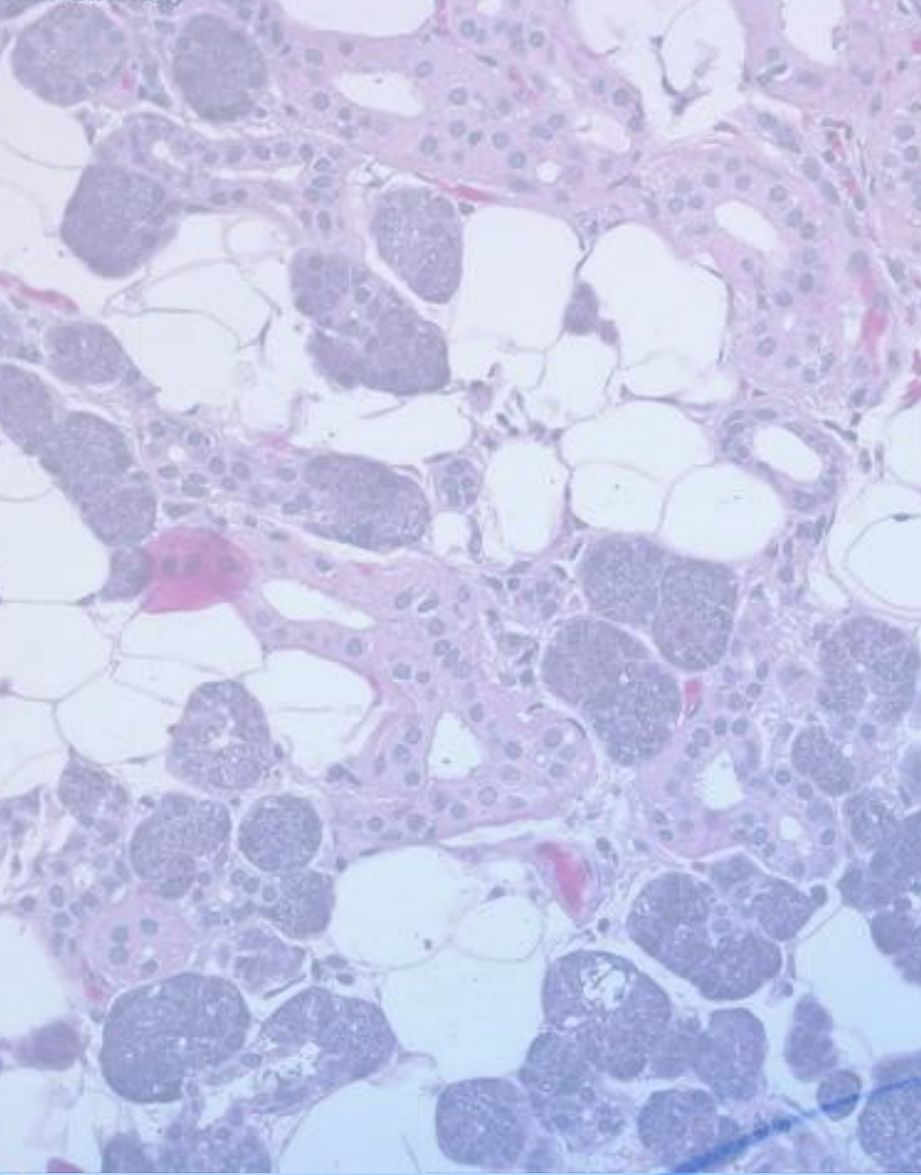
HISTOLOGÍA



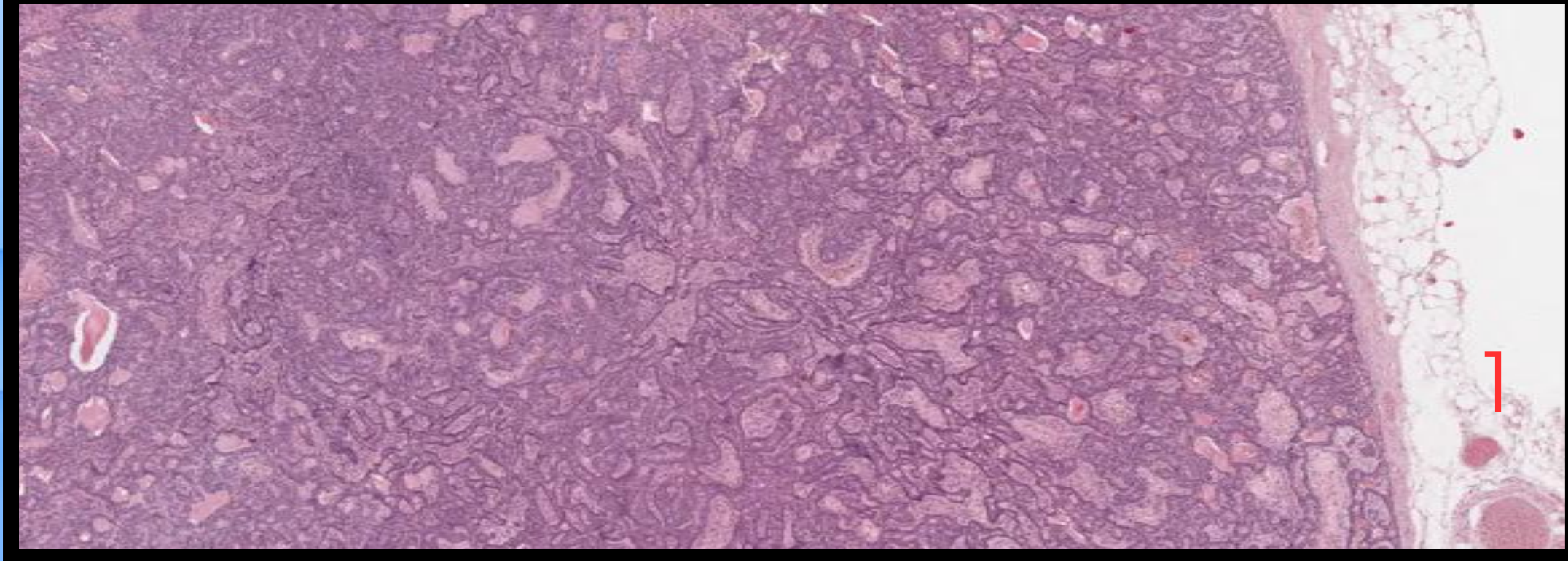
HISTOLOGÍA



HISTOLOGÍA

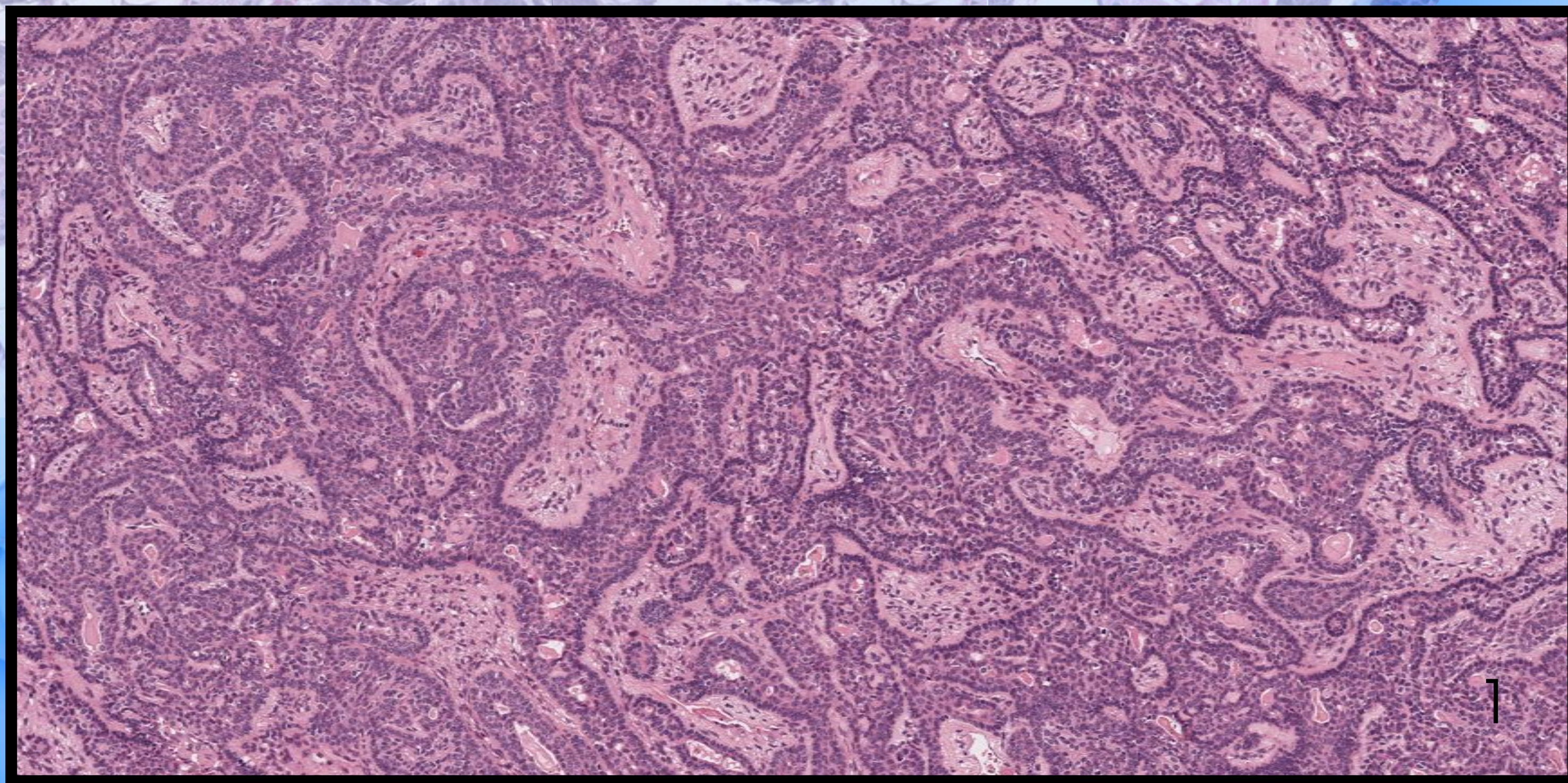


2

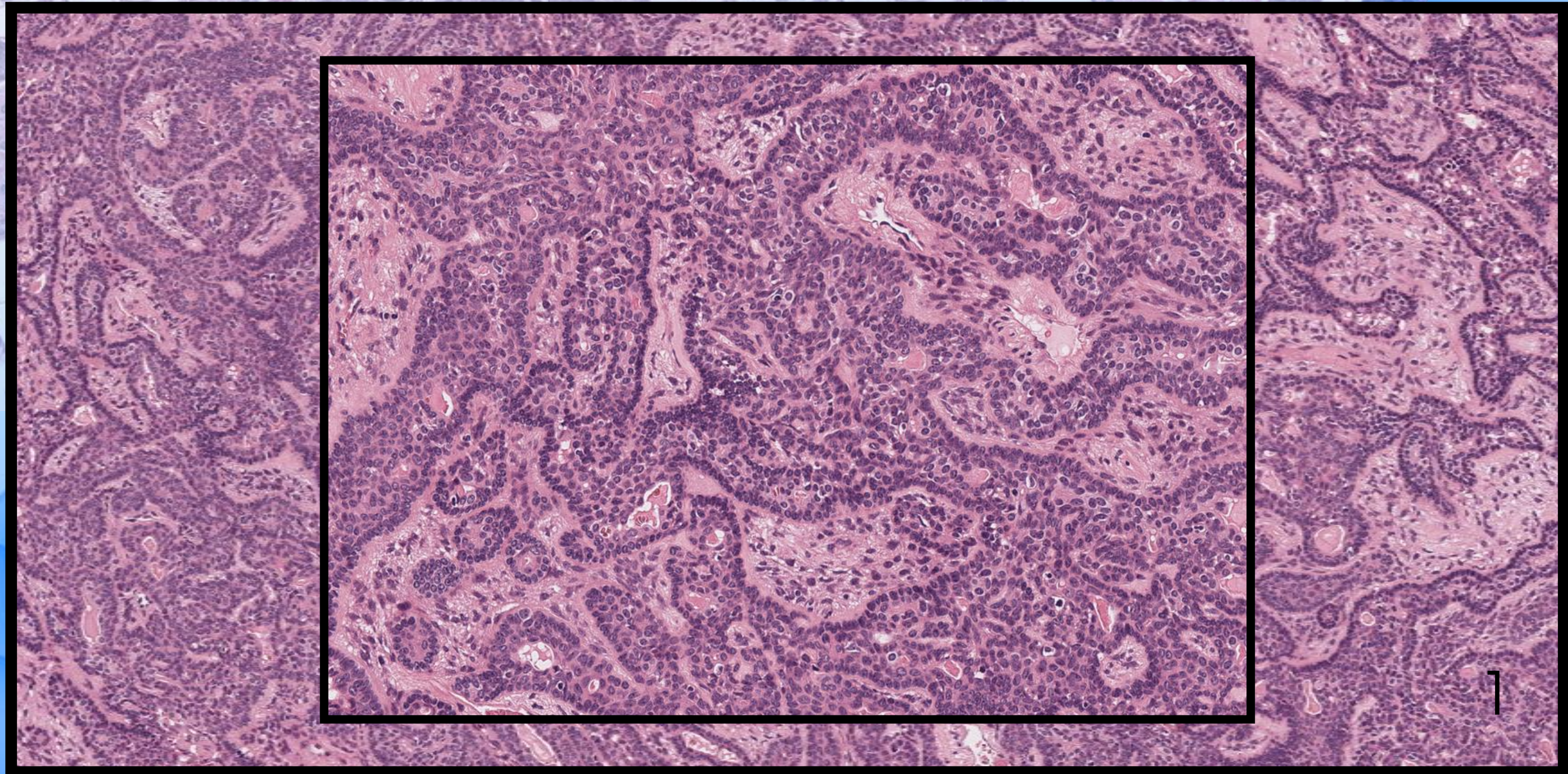


1

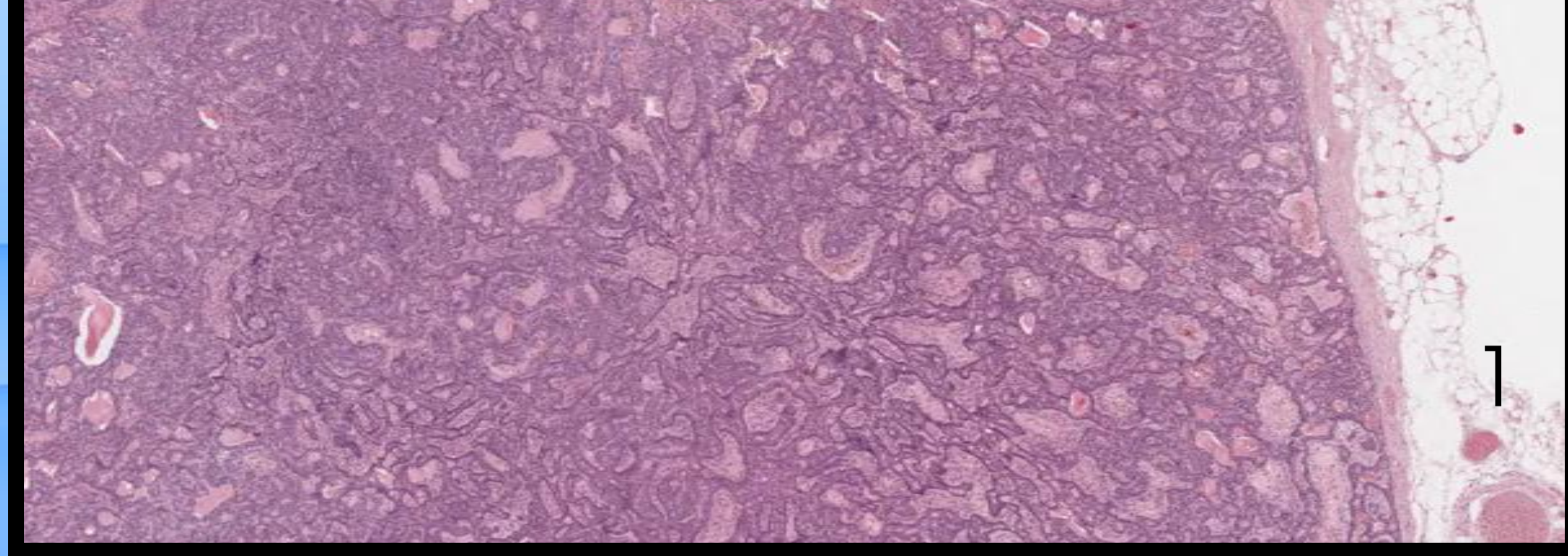
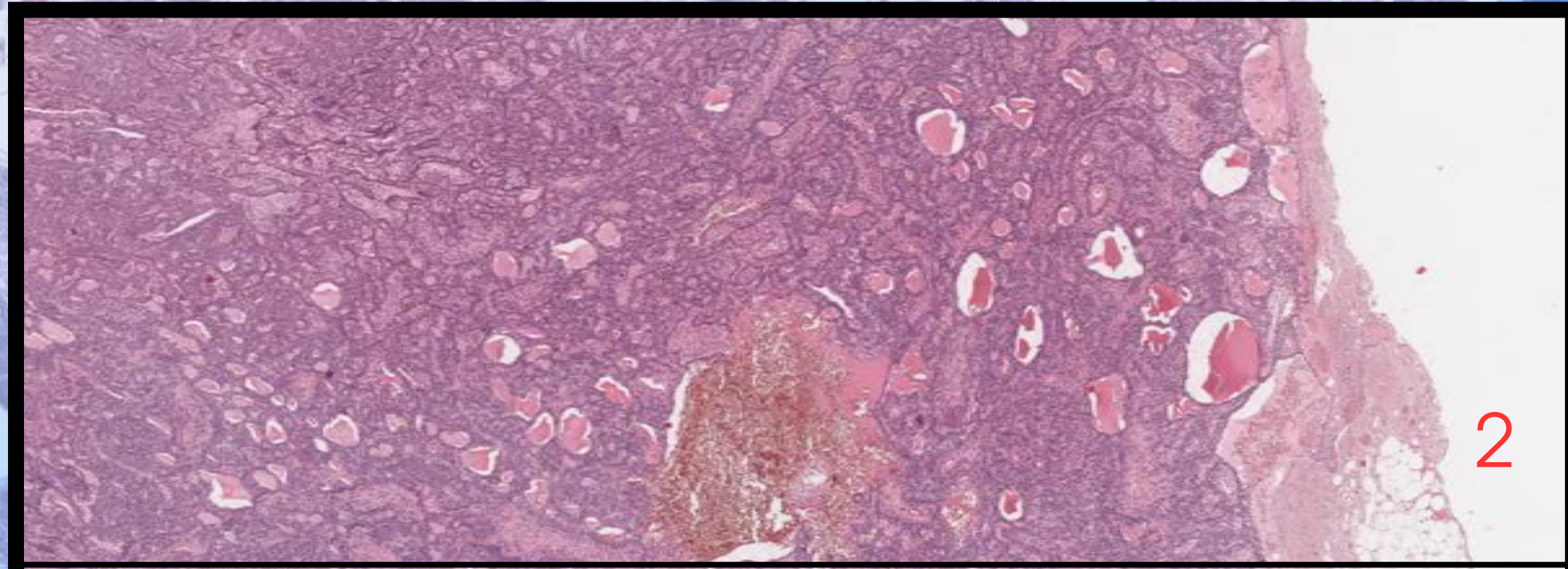
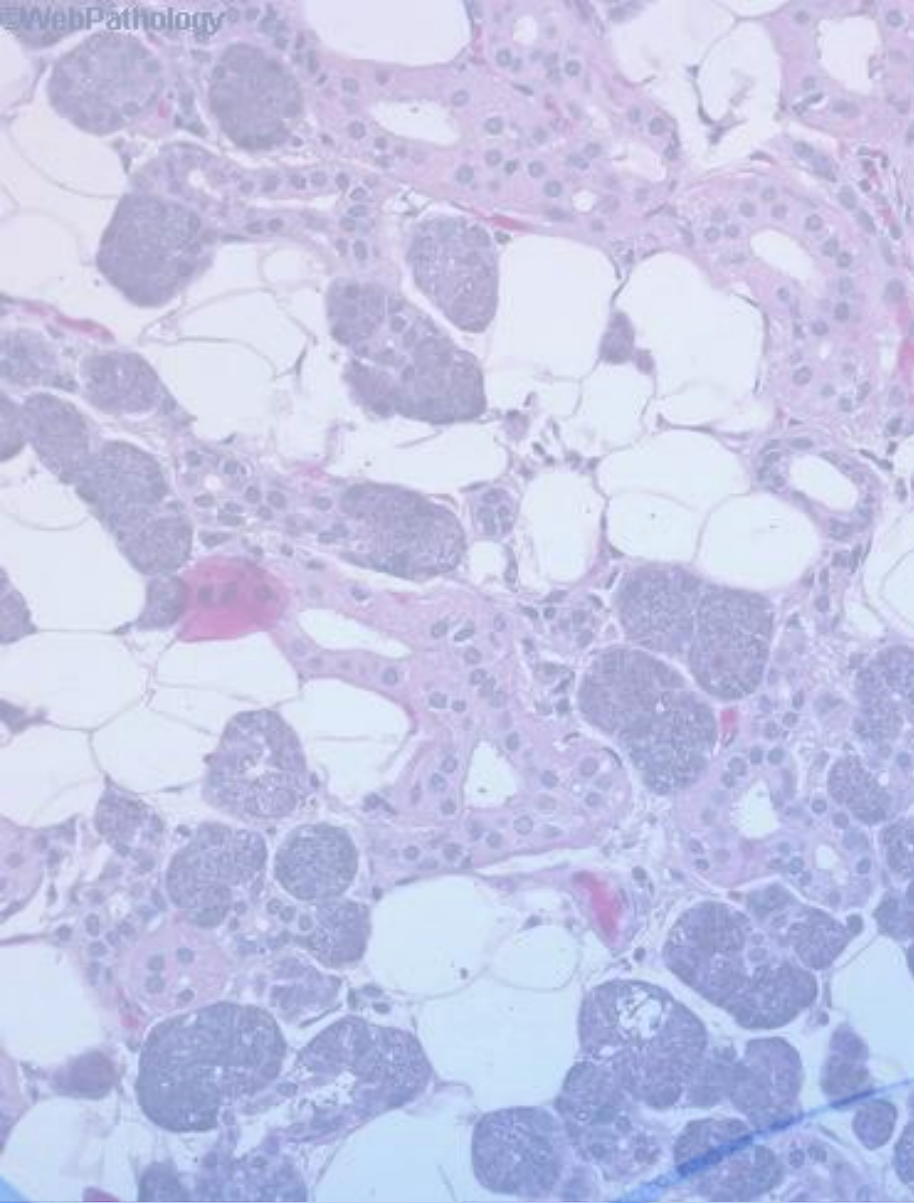
HISTOLOGÍA



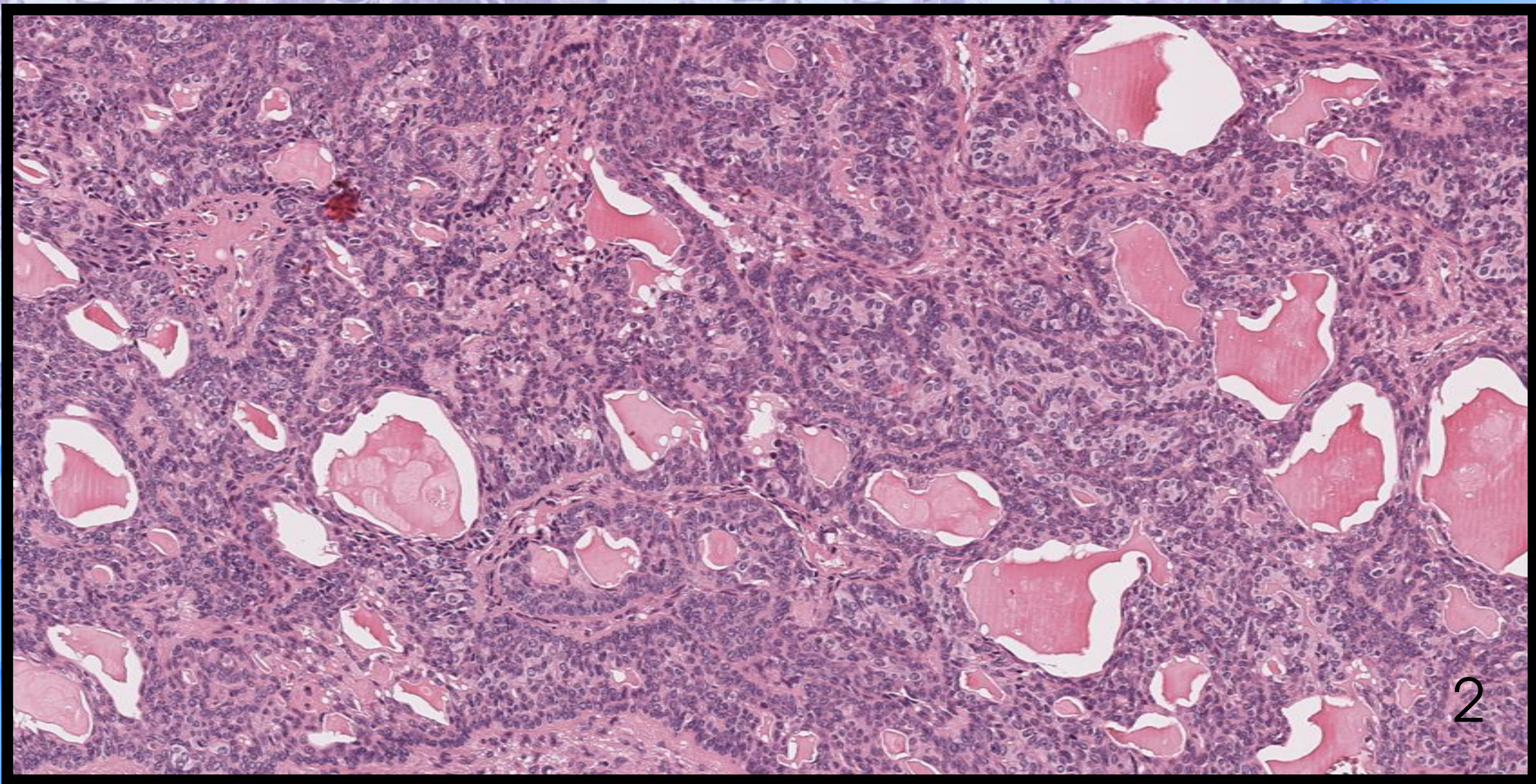
HISTOLOGÍA



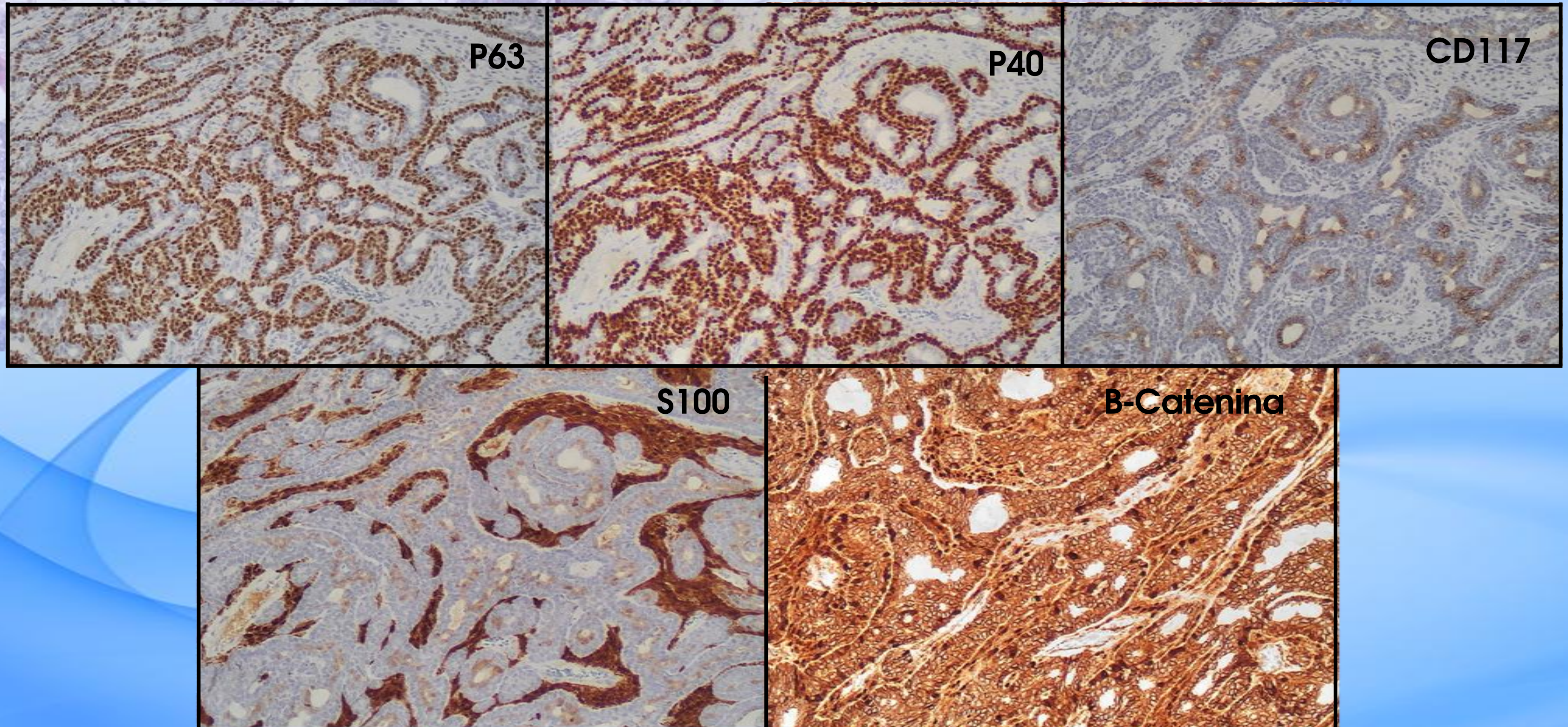
HISTOLOGÍA



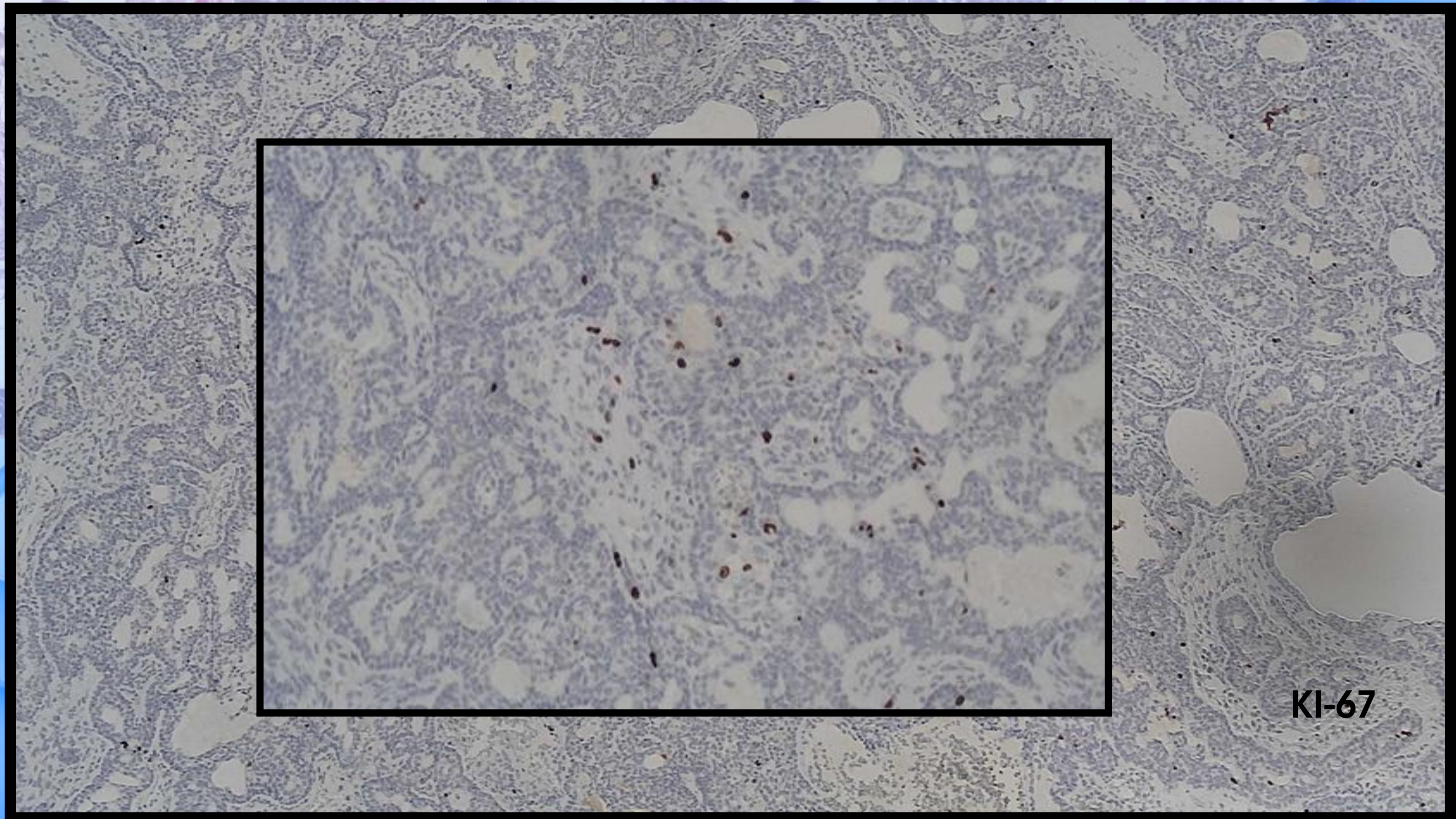
HISTOLOGÍA



INMUNOHISTOQUIMIA



INMUNOHISTOQUIMIA



Adenoma de células basaloideas

1 – 4% de los tumores de GS, 6 -7ma década y predominio F.

Patogénesis: Mutaciones gen *CTNNB1* (B-cat)
→ tubulotrabecular.

Otros: *CYLD1* (membranoso)

Restringido a glándulas salivares mayores
(parótida > 80%)

Clínica asociada: masa solitaria, bien delimitada, móvil.

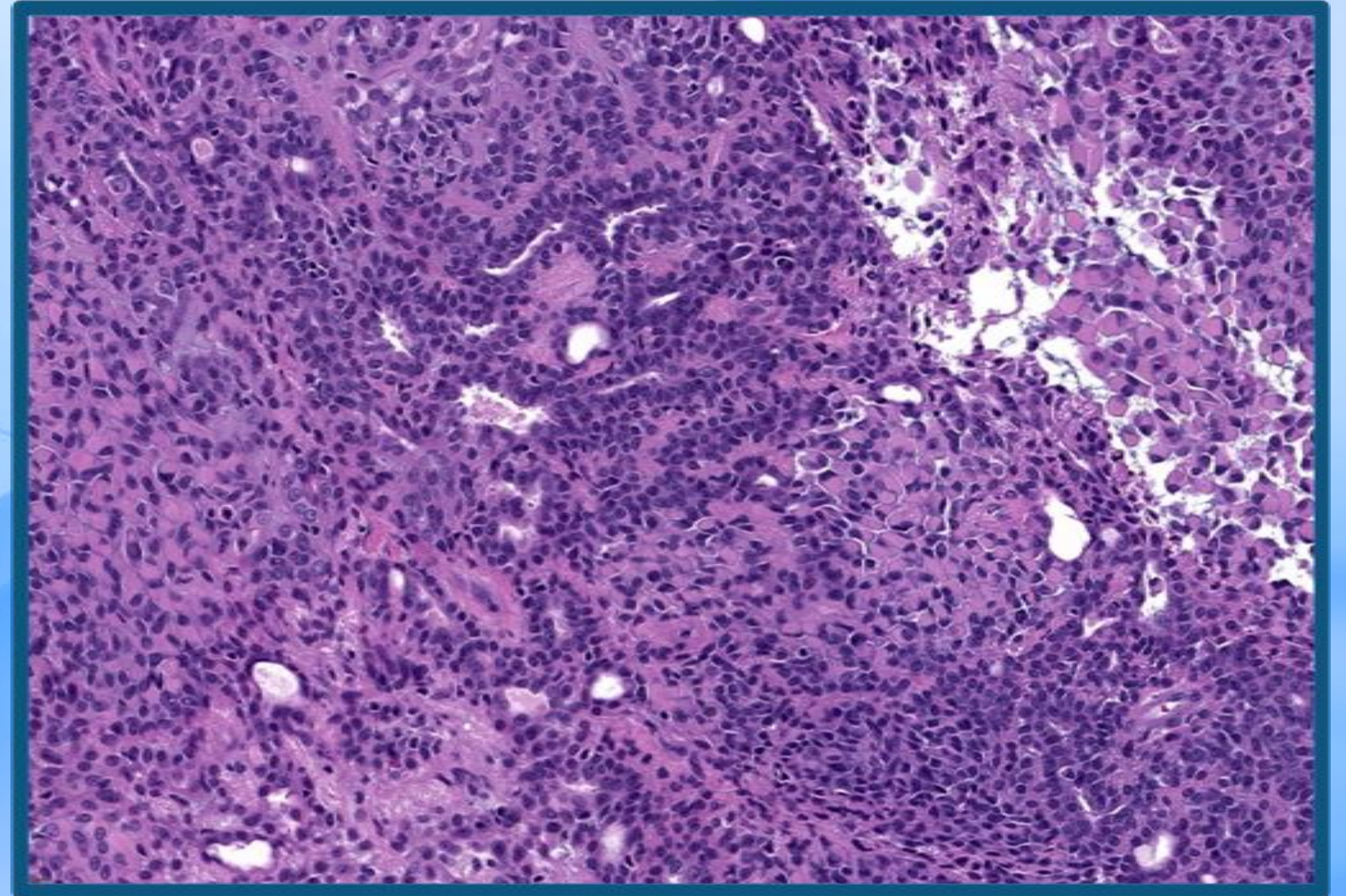
Casos sindrómicos → cilindromas o tricoepiteliomas (familiares)



Diferenciales

Adenoma pleomorfo:

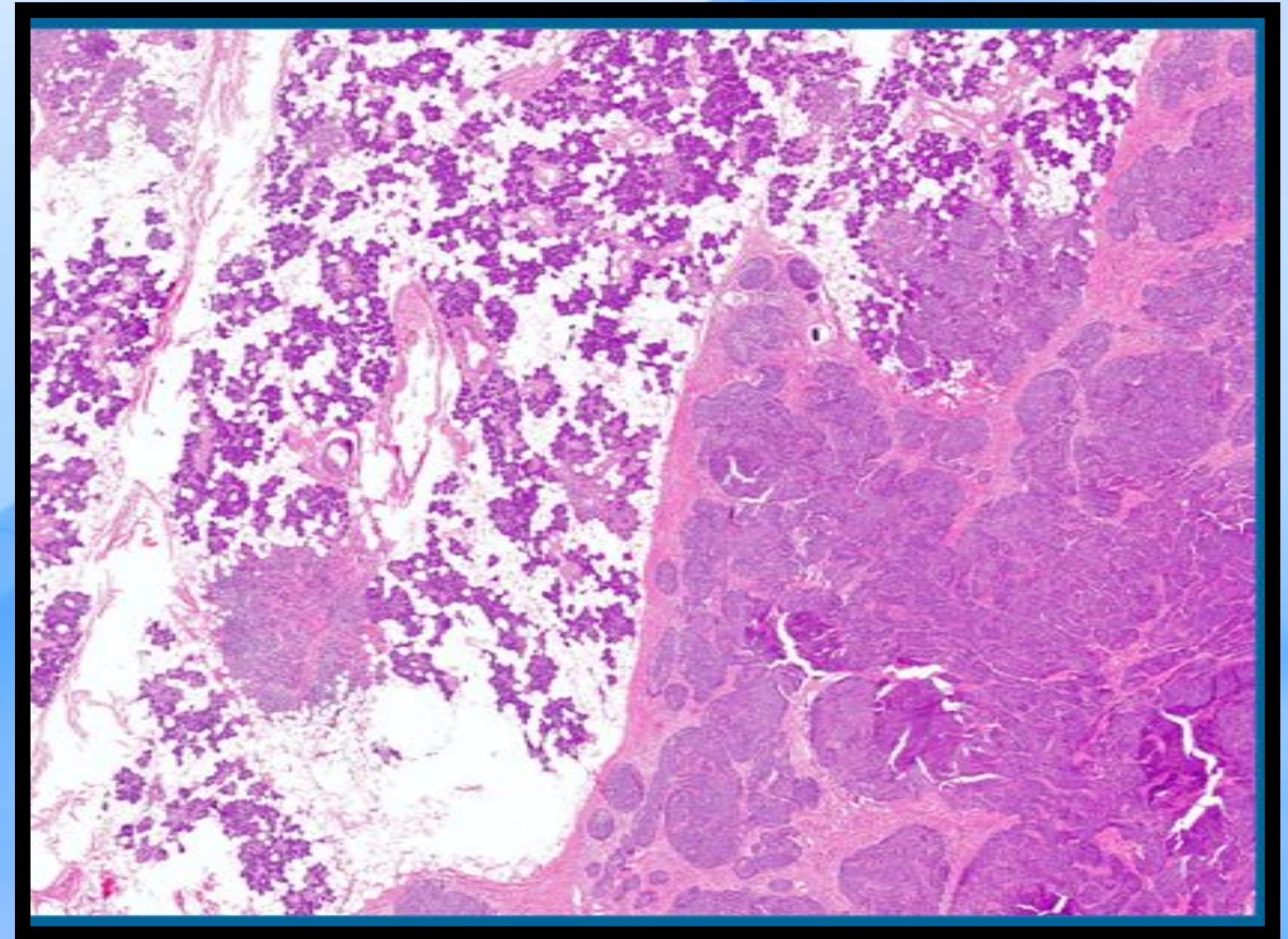
- Apariencia basaloide (variante muy celular) con empalizada periférica.
- +/- queratinización.
- Ausencia de estroma mioepitelial
- B-catenina neg.



Diferenciales

Adenocarcinoma basaloide:

- Bifásico
- Patrones = adenoma
- +/- diferenciación escamosa
- B-Catenina (-)
- **Infiltración periférica**



The image features a blue-tinted background with a blurred microscope. A bright blue lens flare is positioned on the left side, with a thin white horizontal line passing through its center. A thin, vertical yellow line is also present on the left side, extending from the top to the bottom of the frame. The word "Gracias" is centered in the middle of the image in a white, sans-serif font.

Gracias